

UNIVERSITY OF MINNESOTA

Dentistry

FOR ALUMNI OF THE SCHOOL OF DENTISTRY

SPRING/SUMMER 2015



A Master Mentor

Jerome Pedersen, D.D.S., shares his can-do attitude and practical wisdom, and serves as a role model for aspiring dental professionals and for dental practice in Greater Minnesota and beyond.

Inside

A Master Mentor ■ Reaching Out Around the World ■ Give Kids a Smile



PHOTO BY TIM RUMMELHOFF

from the Dean

Dear Colleagues,

This issue of *Dentistry* magazine illustrates how our University of Minnesota School of Dentistry helps shape the world with a global impact and in everyday ways as well. Many of our school's contributions are reflective of the University's 2015 strategic plan and also the public identification of the University that you might see on our stationery and in the media. Here are some of the guiding words (in bold) that are shaping our University today. I hear them when I listen to our leaders, notably President Kaler and Provost Hanson, and I hope you embrace them, too, in the four areas of focus that are defined as the pillars of the University's strategic plan: We will address the **grand challenges** faced by the people of Minnesota and the world. We will lead with **field-shaping professors**. We will carry out **reciprocal engagement** with our community partners. Our University community will lead in all we do and **reject complacency**. We will accomplish all this and more because we are *Driven to Discover*. And it will be all the better because it is *Made in Minnesota*.

We should all be proud of how our School of Dentistry is making a meaningful contribution to our University on all of these fronts, as reflected in this issue of *Dentistry* magazine. To be successful, we will demonstrate daily how our school benefits the University and the people of our state. Our achievements show just how important dental education is to a great American university, the University of Minnesota.

GRAND CHALLENGES: Read about how Conrado Aparicio, Sven Gorr and their team have developed a peptide that is antimicrobial and has promise to impact the use of alloplastic and allogeneic materials across disciplines in medicine and surgery. Dental research is a form of biomedical research with unique and exciting frontiers.

FIELD-SHAPING PROFESSORS: On page 14 we feature our new faculty hires. We can all take pride in these individuals who are destined to have a global impact on our field. I count five continents of ancestral origin (all but Australia and Antarctica), ten separate disciplines (dental hygiene, prosthodontics, oral and maxillofacial surgery, oral and maxillofacial pathology, primary care dentistry, oral medicine, oral radiology, dental hygiene, pediatric dentistry and orthodontics), and broad experience across a range of clinical practice settings and educational institutions. These new Gophers sit on the shoulders of our great field shapers (also highlighted in this issue) such as Bob Gorlin, Jim Zenk, Debra Sidd, Daniel Waite, and our 2014 Professor of the Year, Jill Stoltenberg.

RECIPROCAL ENGAGEMENT: Learn about the contributions of Jerry Pedersen, who took our Hibbing clinic from an idea through more than a decade of leadership that introduced this generation of students to the value, excitement and pleasure of serving rural communities in Minnesota. Beyond Minnesota, our reciprocal engagement extends globally thanks to professors like Karl Self who helped advance oral health education in Rwanda this year.

REJECT COMPLACENCY: Our students and faculty have not been complacent about the status quo that, in our system, often denies children the essential oral health they need to achieve. In this issue we share with you a remarkable School of Dentistry tradition. As they have done since 2005, our students, again, took the lead in organizing a special Saturday clinic where more than 160 children with no access to dental services received free dental care. It took a year to plan and more than 300 students, staff and faculty volunteers to make the day happen. You'll learn about this *Give Kids a Smile Day* event on pages 8-9.

Finally, we conclude this issue by recognizing our donors, our University of Minnesota dentistry supporters who lead through their continued commitment to our school. Their gifts reject complacency about the future of our school and inspire us to achieve even greater impact in the coming years.

In all we communicate in this issue there is a sense that we are driven, driven to be better care givers, oral health professionals and also *Driven to Discover* new ways to improve patient care, dental education and biomedical research. While not all of us can claim to have been *Made in Minnesota*, it is certain that all we do for our school, our communities and our world will now be *Made in Minnesota*.

I hope you enjoy reading about us in this issue of *Dentistry*.

LEON A. ASSAEL, D.M.D.

Dean

Contents

SPRING / SUMMER 2015

www.dentistry.umn.edu



PHOTO BY SCOTT STREBLE



PHOTO BY SCOTT STREBLE



FEATURES

4 **Cover Story: A Master Mentor**

As director of the expanded Hibbing Community College Dental Clinic from its re-opening in 2002 until his 'retirement' last year, Dr. Jerry Pedersen has shared his can-do attitude and practical wisdom with hundreds of dental school students. He continues to serve as a role model for aspiring dental professionals and for dental practice in Greater Minnesota and beyond.

BY RICHARD BRODERICK

8 **Give Kids a Smile**

Photos from the 2015 *Give Kids a Smile Day* event.

12 **Reaching Out Around the World**

When the Rwanda Ministry of Health approached the Clinton Health Access Initiative to help strengthen the specialized health workforce in Rwanda, the initiative turned to U.S. academic partners to lend their expertise to the challenge. The initiative sought out Karl Self, D.D.S., M.B.A., director of dental therapy at the University of Minnesota School of Dentistry, for help.

IN EVERY ISSUE

2 **NewsBites**

Research breakthrough, Saturday Academy, Angie's List Super Service Award, 25th annual Daniel E. Waite Lectureship celebrated.

12 **School News**

Faculty and student news, awards and milestones.

15 **Alumni News**

Letter from SODAS president, alumni awards, and Class Notes.

19 **Events Calendar**

Special events and opportunities you won't want to miss.

20 **Continuing Dental Education**

Upcoming continuing dental education programs to enhance your practice.

SPRING / SUMMER HIGHLIGHTS

10 **2014 Community Report**

21 **2014 Donors**

On the Cover: Jerome A. Pedersen, D.D.S., (*R*) with students and clinic director (*C*) at the Native American Community Clinic in Minneapolis.

PHOTO BY SCOTT STREBLE

UNIVERSITY OF MINNESOTA

School of Dentistry

Driven to DiscoverSM

The University's mission, carried out on multiple campuses and throughout the state, is threefold: research and discovery, teaching and learning, and outreach and public service.

Dentistry is published two times a year for the alumni and friends of the University of Minnesota School of Dentistry. We welcome suggestions and feedback. Please contact *Dentistry* magazine, School of Dentistry, University of Minnesota, 15-136A Moos Tower, 515 Delaware Street SE, Minneapolis, MN 55455 or email kante008@umn.edu. For more information about the School of Dentistry and its programs, refer to the Web site at www.dentistry.umn.edu.

This publication/material is available in alternative formats upon request. Direct requests to Claudia Kanter, School of Dentistry, Department of Marketing and Communications, kante008@umn.edu, 612-625-0402.

The University of Minnesota is an equal opportunity educator and employer.

©2015 Regents of the University of Minnesota. All rights reserved.

♻️ Printed on paper containing a minimum of 10% post-consumer recovered fiber.

DENTISTRY SPRING/SUMMER 2015

UNIVERSITY OF MINNESOTA
SCHOOL OF DENTISTRY
www.dentistry.umn.edu

Leon A. Assael, DMD
Dean

Claudia L. Kanter
Director, Marketing and Communications

Richard Broderick
Claudia Kanter
Erin McHenry
Terri Peterson Smith
Contributing Writers

Pikala Design Company
Graphic Design

Ryan Ritchie
Tim Rummelhoff
Scott Streble
Steve Voit
Photographers

SCHOOL OF DENTISTRY ALUMNI SOCIETY
UNIVERSITY OF MINNESOTA ALUMNI ASSOCIATION
BOARD OF DIRECTORS

OFFICERS

Thomas W. Smyth, '00 DDS
President

Bob Gardetto, '86 DDS
Vice President

Mary Johnson-Pariseau, '84 DDS
Secretary/Treasurer

Kim Johnson, '79 DH
Immediate Past President

BOARD MEMBERS

S. Kaye Adams, '76 DH
Mark Bachman, '00 DDS
Diane Clysdale, '87 DH
Scott Durand, '12 DDS
Laura Eng, '80 DDS
Jo Ann Omlie, '74 & '80 DDS
Mark Roettger, '82 DDS
Michael Sudit, '85 DDS
Darren Sullivan, '09 DDS
Cindy Sundet, '85 DDS

DIRECTOR OF ALUMNI RELATIONS
Emily Best

COLLEGIATE COUNCIL REPRESENTATIVE
University of Minnesota Alumni Association
Susan Gross, '82 DDS

News Bites



School of Dentistry Researchers Identify New Anti-Bacterial Coating for Dental Implants

University of Minnesota researchers have developed a novel coating for the titanium used in dental implants. The coating kills bacteria on contact and prevents biofilm buildup that can cause infection and implant failure. The findings were published in *PLOS ONE*.

The germ-fighting compound, a new antimicrobial peptide called GL13K, was derived from a human protein found in saliva and developed by Sven-Ulrik Gorr, Ph.D., study co-author and professor (Department of Diagnostic/Biological Sciences) at the University of Minnesota School of Dentistry. The research will now move to an animal model.

"The coating kills bacteria by contact," Gorr said, "eliminating biofilms from forming on the coated surface of the implant."

"This is unique because many coatings used to fight bacteria will release the anti-bacterial molecules into the mouth," said co-author Conrado Aparicio, Ph.D., deputy director of the dental school's Minnesota Dental Research Center for Biomaterials and Biomechanics. "Our device doesn't do that. The antimicrobial material is actually part of the implant itself."

The research team studied the interaction between the peptide coating and bacteria in the lab using a drip-flow biofilm reactor, which simulated human salivation. The peptide killed most of the bacteria *S. gordonii* that colonize in the mouth to initiate plaque. It also destroyed *P. gingivalis* bacteria that causes periodontal disease, which can result in bone loss in the jaw and compromise support of both natural teeth and dental implants.

According to the American Academy of Implant Dentistry, three million Americans have dental implants, a number that grows by 500,000 each year. Infection is a major cause of dental implant failure.

For patients, the findings of this study could potentially translate to safer dental implants and a reduced risk of plaque and gum disease.

The GL13K coating is stable and appears safe in the oral environment; many alternatives such as traditional antibiotics or biocides cause bacterial resistance or expose the body to toxins.

Aparicio and Gorr hope to adapt the peptide coating for use with prosthetic limbs and implants in other parts of the body, such as hips and knees. Gorr said he would also like to modify GL13K to attack other biofilms, like the mucus that fills the lungs of people with cystic fibrosis.

"If we can prevent bacteria from attaching to dental implants, why not try it on implants used in other parts of the body?" Gorr said. Gorr and Aparicio both stressed the importance of collaboration in the study.

Gorr says, "Everyone who worked on this project has an individual specialty; as a team, we were able to develop this device."

That collaborative, team-oriented approach will continue in the next phase of their research. They will translate these findings into an animal model to further determine effectiveness of the coating, through the support of the U of MN's Clinical and Translational Science Institute, and in collaboration with Joan Bechtold, Ph.D., at the Minneapolis Medical Research Foundation at Hennepin County Medical Center.

Xi Chen, D.M.D., Ph.D., Helmut Hirt, Ph.D., and Yuping Li, Ph.D., also contributed to this study.

The project was funded by the 3M Foundation, the National Institute of Dental and Craniofacial Research, and the Office of the Vice President for Research at the University of Minnesota.

University of Minnesota Dental Clinics earned the service industry-coveted Angie's List 2014 Super Service Award.

Reaching out to build a healthy Minnesota.

Eleventh graders from Ubah Medical Academy Charter School (St. Paul) and Southwest High School (Minneapolis) try their hand at dentistry as part of the dental school's *Saturday Academy*. Now in its fifth year, the 22-week pipeline program for middle and high school students was created to enhance science, math, English and leadership skills, with the goal of preparing young students from underrepresented communities to pursue science disciplines in college that ready them for a career in dentistry or other health professions.



Standing on the Shoulders of Giants

When Daniel E. Waite, D.D.S., M.S., graduated from dental school in 1953, oral and maxillofacial surgery was a young dental specialty. Over the course of his 40-year career, which included 17 years at the University of Minnesota as professor and chair of oral and maxillofacial surgery (OMS), he helped

educational events for OMS surgeons, residents and dental students, the *Daniel E. Waite Lectureship* celebrated its 25th anniversary on March 27-28 when more than 90 participants from across the Midwest convened at the University of Minnesota. The lectureship also drew an impressive roster of speakers. "Like Dan

Waite himself, they're always giants in the field," says James Swift, D.D.S., professor in the University's Division of Oral and Maxillofacial Surgery and long-time co-organizer of the event.

Daniel Waite himself welcomed the audience. Also attending were Waite's son, Peter Waite, M.P.H., D.D.S., M.D., and his granddaughter, Elisabeth (Betsy) M. Peterson, D.D.S., both oral and maxillofacial surgeons and University of Minnesota dental school graduates. This year, Peter Waite was a guest presenter on the topic of treatment



At the 2015 Daniel E. Waite Lectureship: School of Dentistry oral and maxillofacial surgery residents, Dr. Elisabeth Peterson (Front row, right-center) and speakers (middle row, L to R): Drs. Peter Larsen, William Nelson, Leon Assael and Harold Tu.

shape the profession. Waite was one of the giants of OMS education at the University's School of Dentistry and beyond, and he left a legacy that inspired others to learn more, do more and become more.

Today, that legacy is annually celebrated at a lectureship named in his honor. Recognized as one of the premier

options for correcting jaw and tooth deformities. Peter Waite is the OMS chairman at the University of Alabama at Birmingham School of Dentistry. Betsy Peterson is a private practitioner in the Twin Cities area.

Also among the featured lecturers were Bruce MacIntosh, D.D.S., clinical professor at the University of Detroit

Mercy School of Dentistry, and Peter Larsen, D.D.S., president of the American Board of Oral and Maxillofacial Surgery and professor at The Ohio State University. MacIntosh shared his perspectives on the history of OMS discoveries and pioneers, and Larsen discussed dental implant reconstruction for children who do not have normal tooth development. Presenters Leon Assael, D.M.D., U-M School of Dentistry dean, and Harold Tu, M.D., D.M.D., director of the dental school's Division of Oral and Maxillofacial Surgery, reviewed the past and future of OMS education. Also participating was American Association of Oral and Maxillofacial Surgery President William Nelson, D.D.S., who answered questions about issues of current interest to the profession.

Says Swift, "I like to think this conference is both a tribute to the contributions and leadership of Dan Waite, as well as a reflection of his legacy of excellence in OMS education and practice."

Twelve OMS residents gave oral case presentations. Says Swift, "For many of these young professionals, this opportunity to learn from leaders in the field is their favorite academic experience."

Held annually for OMS residents from the University, Mayo Clinic and Gunderson Lutheran Medical Center in La Crosse, Wis., the conference is co-sponsored by the University of Minnesota Foundation and the U-M School of Dentistry, the Mayo Clinic, and the Minnesota Society of Oral and Maxillofacial Surgeons.

A Master Mentor

As director of the expanded Hibbing Community College Dental Clinic from its re-opening in 2002 until his 'retirement' last year, Dr. Jerry Pedersen has shared his can-do attitude and practical wisdom with hundreds of dental school students. He continues to serve as a role model for aspiring dental professionals and for dental practice in Greater Minnesota and beyond.

BY RICHARD BRODERICK



Nathan Pedersen was 15 years old when he put together enough money to buy his uncle's 1946 Willys MB, commonly known as a Jeep.

This was up in his hometown of Hibbing, where his father, Dr. Jerome Pedersen ('77), was in private dental practice. Father and son rolled the moribund Willys to the garage at Nathan's grandmother's place. They went to work.

"I didn't realize what rough shape it was in," says Nathan Pedersen, a 2004 School of Dentistry graduate and himself now a dentist with his own practice in Hibbing. "We ended up doing a complete restoration—every nut, every bolt, the entire engine and transmission."

Nathan admits that he knew nothing about vehicles, although his father, fortunately, did. A lot. "I was constantly amazed by the way we'd run into something that I thought looked too complicated to take apart and fix properly and my dad would say, 'Oh, nonsense. If we can take it apart, we can put it back together again.'" And they did. The father and son team restored the vehicle and Nathan Pedersen owns the jeep to this day.

Meanwhile, this story is not just an anecdote. It's also emblematic—a symbol of the kind of inspiration Jerome (Jerry)

Pedersen brings to dentistry, not just as a practitioner but also as a mentor to young dentistry students, his own son among them.

Nathan credits his father's example not only for his career choice, but also for his decision to opt for a small town practice. It's safe to say Jerry Pedersen played a similar role for many of the students he mentored at the Hibbing Community College (HCC) Dental Clinic.

Pedersen joined the School of Dentistry faculty in 2001. Earlier that year he'd sold

"I appreciated the way he interacted with me in front of patients and staff...it was a great transition for me."

— KIMBERLY RAUK, D.D.S.
CLASS OF 2003

his dental practice of 25 years and the University had partnered with the Hibbing Community College to expand its teaching facility for dental assisting students. Pedersen helped open the expanded clinic in 2002 and served as its first director.

Since then, more than 1,000 University dental and dental hygiene students have spent time there getting hands-on experience, at first on a volunteer basis and,

since 2005, as part of the school's mandatory outreach requirement.

In 2014, Pedersen retired from dentistry, although he continues to work one or two days a month at the Hibbing clinic and puts in a similar stint at Rice Regional Dental Clinic in Willmar, a seven-hour round-trip drive from his home, and at School of Dentistry outreach sites in the Twin Cities, a slightly longer drive.

Between 2001 and his 'retirement,' Pedersen mentored hundreds of young dentists, bringing to bear his can-do attitude, his practical wisdom, and his collegial respect for students. He fired their aspirations, helped them hone their skills, and introduced them to the reality of 'outstate' practice. Many of those same students can now be found thriving in their own practices in towns across the state.

This certainly was the effect on Dr. Kimberly Rauk, who began her mentorship at Hibbing in January 2003. In her first days at the clinic, she recalls how Pedersen, "emphasized that being there was my chance to experience what a clinical practice is really like," she says.

"I appreciated the way he interacted with me in front of patients and staff. It started to sink in that, 'Wow! I'm the person who has responsibility. I'm the decision-maker.' It was a great transition for me." ☺

Jerry Pedersen ►



U OF MN
DENTISTRY

University of Minnesota
School of Dentistry

University of Minnesota
Jerome
Petersen
02/07
Faculty/Staff

After graduating from dental school in May 2003, Rauk went on to establish her own practice, Rauk Family Dentistry, in 2004 in Alexandria, Minnesota. In doing so, she not only became that town's first female dentist, she also fulfilled one of the dental school's objectives for the student outreach experience which is to provide quality education experiences while introducing students to life and practice in Greater Minnesota and underserved communities, with the knowledge that they will be more likely to consider practice locations in these areas after graduation.

Personal Touch

Pedersen's mentoring style with Rauk reflects his personal philosophy of teaching, which, in turn, reflects his approach to dentistry.

"Our students at the dental school are our colleagues," he observes. "I show them the respect they deserve because I fully respect what they are doing."

Jacobson, who now has a practice in St. Cloud. "We were well taken care of." Pedersen arranged for the students to live in a new apartment building leased by the dental school from the Hibbing Community College. But he went beyond that, introducing the students to the local community, including its medical and dental practitioners, and taking them to meetings of local organizations, such as

"Students often start off seeing patients as a set of teeth... Jerry has modeled how to treat patients as human beings—how to be both professional and empathetic."

— PAUL SCHULZ, D.D.S., M.P.H.
DIRECTOR, DIVISION OF OUTREACH

in making the decision to work somewhere other than the Twin Cities."

"He's extremely committed," Paul Schulz, director of the dental school's Outreach Division, observes about Pedersen. "What he shows students is not only how to do dentistry well, but how to connect with patients. When someone arrives for an appointment, he will often come in to the treatment room and say something like, 'Hi, Mary, how are you? Did your daughter get married yet?'"

And while this may seem like nothing more than an example of small town ethos, Schulz believes the lesson is far more significant. "Students often start off seeing patients as a set of teeth," he says. "Jerry has modeled how to treat patients as human beings—how to be both professional and empathetic."

Back to the Land

The Hibbing Community College Dental Clinic is a collaboration between the University and the Minnesota State Colleges and University System (MnSCU). The creation of the clinic marked a significant expansion of the dental school's education program.

At the time, outreach experiences for dental students were recommended though not required, a situation that changed ten years ago with the formal requirement that all students engage in at least one, two-week outreach experience before graduation. In the early years, the experiences varied in length—altogether, Kimberly Rauk spent several months during three separate tours of duty in Hibbing.

Today, 'outreach' is a graduation requirement for all School of Dentistry students and the Hibbing clinic is one of 16 sites offering the required experience, which now lasts 9-12 weeks. In keeping with the University's land-grant mission, the dental school is extending the resources of the University to address community needs, locating all but three of its Minnesota outreach clinics in rural areas. As Pedersen said at the time of his 2014 semi-retirement from Hibbing, "What the Hibbing clinic has always done is to show students that outstate Minnesota is a viable practice area for dentists and dental health professionals. We don't 'push' rural or outstate practice, but students do come up here and see that there are many places around



PHOTO BY SCOTT STREBLE

In Spring 2015, Jerry Pedersen with (then) fourth-year dental student Seth Huiras at the Native American Community Clinic in Minneapolis, Minn.

For students on outreach rotations in Hibbing, Pedersen's teaching was not confined to the clinic per se. Dr. Timothy Jacobson ('02) spent the spring semester of his senior year of dental school at the clinic. His experience was typical of students, especially in the early years.

"He [Dr. Pedersen] had a big hand in helping us new students set up," recalls

the Hibbing Chamber of Commerce.

"He even had us out to his cabin and for dinner at his house," Jacobson says. "During the week, we'd lunch together as a group and sometimes go out for coffee after clinic hours were done.

"These kinds of experiences very much contributed to my dental education," he says. "It was very helpful to me

Minnesota that are great places in which to live and practice. The patient-perdentist ratio is much higher than in the Twin Cities. Dentists take care of many more people out here—and they have to be able to offer a wide range of services, from everyday care to extractions, crowns, bridges and more.”

During her two externships at the Hibbing clinic, in the fall of 2008 and spring of 2009, Patty Stone, D.D.S. ('09), who now has her own practice in Virginia, Minnesota, got a first-hand look at some of the challenges outstate dentistry can present practitioners.

“I had a patient come [to the Hibbing clinic] who had experienced root decay all through life,” she recalls. The decay was deep and the tooth roots were not accessible without surgery. At the dental school clinic, that work would have been performed by a periodontist—but none was available in the Hibbing clinic that day. And there was no guarantee that the patient would return if not treated immediately.

“We don’t ‘push’ rural or outstate practice, but students do come up here and see that there are many places around Minnesota that are great places in which to live and practice.”

— JERRY PEDERSEN, D.D.S.
ASSOCIATE CLINICAL SPECIALIST,
DIVISION OF OUTREACH

“Dr. Pedersen looked at me and said, ‘Flap it, isolate the roots and do your fillings,’” Stone recalls. He then helped walk her through the procedure from start to finish. The experience was critical training for what she would encounter in her own practice.

“We have patients from rural areas who should see a specialist but for one reason or another, don’t,” she says. “So rural dentists really need a broad clinical foundation to do this kind of work.”

And even when patients do not need treatment that would normally be undertaken by a specialist, there are other differences between Stone’s patients



In 2011, Jerry Pedersen with (then) fourth-year dental student Jennifer Dylla at the Hibbing Community College Dental Clinic.

and those she would have encountered in an urban dental practice.

“We get a lot of calls from patients saying, ‘Hey I broke a tooth’ or ‘I have a toothache’—and a year ago you told them they needed a root canal and they didn’t get it and now they need an extraction,” she says.

“There are also many patients out here who either can’t afford dental care or would rather spend money elsewhere,” she says. “That includes many elderly patients who can’t afford a bridge, say, and just want a patch. You have to be very well-versed with how, for example, to manage large fillings and have them last longer.”

Understanding the Job

“When I first began, Jerry was about the only person who understood my job,” recalls Paul Schulz, director of the dental school’s Division of Outreach. “In 2004, the [then] new dean came to me and said ‘I want to make this kind of externship an outreach requirement, with goals and mission statements.’ We didn’t have any criteria, not even a division of outreach.”

But in Hibbing, Schulz found a model for the new initiative, which was especially helpful in developing outreach rotations at other clinics around the state. “Among the things we look for are clinics—like the one that already existed in Hibbing—where there is current dental technology, such as online record keeping and, above all, a student-friendly environment.”

In the meantime, Pedersen also was making it clear that there would be demand for an expanded outreach initiative, contacting Schulz on a regular basis and informing him that the Hibbing clinic could use more dental students. “Over time we started scheduling students up there for four weeks at a time,” says Schulz.

Pedersen, Schulz recalls, also modeled professional hospitality by making students feel welcome from day one, not just at the clinic but also in their new community and in the area’s dental network. “When they came up to Hibbing he made a point of inviting a group of them to his house for dinner,” Schulz says. “He did this for several years.”

Dr. John Zupancic ('92), who assumed the directorship of the Hibbing Community College Dental Clinic in January 2014, says he wants to continue what Dr. Pedersen was doing—caring for patients and attracting young dentists to underserved areas of the state.

“We still have a shortage of dentists up here,” Zupancic says. “But Dr. Pedersen had a quantifiable effect on staffing this region with dental professionals.

“He was the ideal director to establish the clinic and get it to the place where it is now,” he says. “He’s still beloved by his former students—and former and current patients.”

Says Zupancic, “I know I have very big shoes to fill!” ☉



School of Dentistry Students Provide Free Dental Care on *Give Kids a Smile Day*

The Tooth Fairy made a rare daytime appearance at the University of Minnesota on Saturday, February 7, 2015, when she stopped by to visit with some of the 160 children on-hand to receive free dental care in the School of Dentistry's Moos Tower pediatric dental clinic. Free dental services were provided as part of *Give Kids a Smile*,[®] a national event held annually to call attention to the growing number of children from low income households who cannot access dental service. The School of Dentistry's student-





coordinated event drew children and parents from throughout the Twin Cities.

Each child received radiographs, an examination and treatment plan, plus emergency and some restorative care prioritized to address the most critical needs first. Routine and specialty dental services included fillings, endodontic procedures, cleanings, extractions, fluoride treatments, stainless steel crowns, and the placement of dental sealants. ☺

PHOTOS BY RYAN RITCHIE



2014 Community Report

The charts below represent the unaudited revenue sources and expenses of the School of Dentistry for fiscal year 2014.

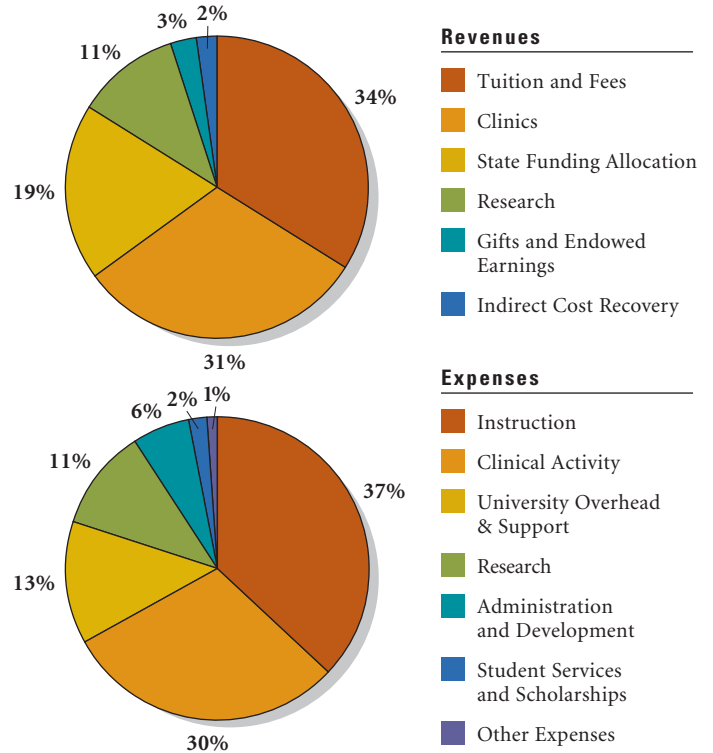
REVENUES & EXPENSES

Revenues (in thousands)

Tuition and Fees	\$	25,000
Clinics	\$	22,600
State Funding Allocation	\$	14,200
Research	\$	8,300
Gifts and Endowed Earnings	\$	2,300
Indirect Cost Recovery	\$	1,800
Total	\$	74,200

Expenses (in thousands)

Instruction	\$	28,000
Clinical Activity	\$	22,300
University Overhead & Support	\$	10,000
Research	\$	8,300
Administration and Development	\$	4,800
Student Services and Scholarships	\$	1,200
Other Expenses	\$	600
Total	\$	75,200



Revenues Notes

Financial results for the University of Minnesota School of Dentistry for the fiscal year ended June 30, 2014 continue to reflect a challenging environment for public, research intensive dental schools. Expenses exceeded revenues by \$1.0 million for the fiscal year for the second consecutive year. Overall fund balances for the School of Dentistry declined to the lowest levels in a number of years as a result of the loss. Looking ahead, the School has made the decision to freeze faculty and senior staff salaries for FY2015 in response to the financial results while continuing to invest in programmatic opportunities.

Total revenues for the School of Dentistry increased \$1.8 million for the fiscal year ended June 30, 2014, from \$71.8 million to \$73.6 million. Increases resulted from higher tuition and fees and higher clinical revenue. State funding through the central university was flat for the fiscal year. Research funding declined modestly as described below.

Clinical revenues increased by \$2.4 million. Clinical activities reflect continued pressures on public program reimbursement levels as well as the effect of the access challenges to our clinics presented by the light rail construction project. However, efforts to increase pre-doctoral patient flow as well as a full year of results for the pediatric clinic had positive impact on overall clinic revenues.

State Funding Allocation received by the School of Dentistry was held constant by the central University. State funding as a percentage of overall revenue continues to decline. In absolute dollars funding remained at \$14.2 million (which includes a \$2.0 million allocation to replace MERC funding eliminated by the state legislature in 2012). Tuition and fees continued to widen their gap over state funding support. This trend was in evidence across the entire University. Student debt levels are an increasing concern. Although our institution has seen no decline in applicants, national applicant levels to dental schools declined by approximately two percent.

Research revenues decreased due to increased federal budget reductions in this area and the competitive climate for basic research. Research revenue decreased from \$8.5 million to \$8.3 million. Despite the reduction, the University of Minnesota continues to be a top performing dental school for research.

Indirect Cost Recovery revenues that are connected to direct research revenues were flat at \$1.8 million.

Tuition and fee revenue increased \$1.2 million from \$23.8 million in FY2013 to \$25.0 million in FY2014. The University of Minnesota School of Dentistry has historically targeted the mid range of publicly supported Midwestern dental schools when determining tuition rates, and is generally much less expensive for residents than private institutions.

Gifts and Investment Returns included in operational results increased by \$0.4 million, from \$1.9 million to \$2.3 million due to improved equity market returns and continued alumni support. These amounts do not include gifts to the School of Dentistry that are managed by the University of Minnesota Foundation that are still invested with the Foundation.

Expenses Notes

Total expenses for the School of Dentistry increased \$1.7 million for the fiscal year ended June 30, 2014, from \$72.9 million to \$74.6 million, primarily due to increases in compensation and staffing (\$2.1 million). Other expenses declined by \$0.4 million.

Instructional expenses increased \$1.5 million, from \$26.5 million to \$28.0 million, primarily related to contractual fringe benefit increases, contractual compensation increases and additional faculty.

Clinical expenses were increased by \$0.5 million, from \$21.8 million to \$22.3 million.

Research expenses decreased by \$0.2 million, from \$8.5 million to \$8.3 million, due to a decline in research revenue.

University Overhead and Support increased \$0.4 million from \$9.6 million to \$10.0 million. This category includes the School of Dentistry's pro-rata portion of such University wide expenses as facilities management, libraries, central administration, technology and research administration and compliance.

Administration and Development expenses increased \$0.6 million, from \$4.2 million to \$4.8 million, due to additional expenses incurred for the 2013 accreditation review.

Scholarships and Student Services increased from \$1.1 million to \$1.2 million. **Other Expenses** were negligible for FY2014.

Jeff Ogden
Chief Administrative Officer

2014-15 STUDENT STATISTICS

2014-15 FIRST-YEAR DENTAL CLASS PROFILE

Paid Faculty Appointments*

	Full Professor	Associate Professor	Assistant Professor	Total
Tenure/Tenure Track	22	38	3	63
Research Track	0	0	5	5
Clinical Track	3	13	37	53
Adjunct	21	36	73	130
Total	46	87	118	251

*As of May, 2015.

Students | Fall Semester Enrollment 2014

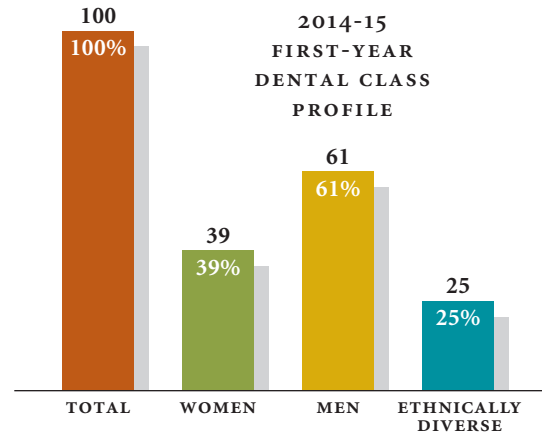
Dental Hygiene, B.S.	47
Dental Hygiene, Master Degree	16
Dental Therapy	23
D.D.S.	392
Advanced Education & Graduate Programs	91
Program for Advanced Standing Students	23
Total	592

2014 Graduates

Dental Hygiene-Baccalaureate Program	22
Master of Dental Hygiene	2
Doctor of Dental Surgery	110
Professional & Graduate Degrees Awarded	35
Dental Therapy	9
Total	178

Total Number of Applicants
Class Size

1,163*
100



Average GPAs

Overall GPA	3.59
BCP (Bio, Chem, Physics) GPA	3.53
Science GPA	3.54

Average DATs

Academic Average	20.09
Perceptual Ability	20.94
Total Science	19.92
Reading	20.64

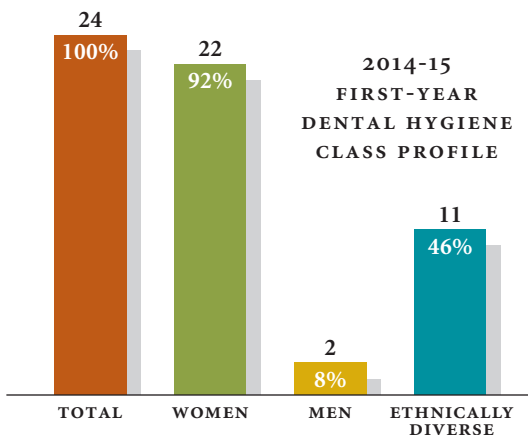
*These figures represent AADSAS calculations.

2014-15 FIRST-YEAR DENTAL HYGIENE CLASS PROFILE

2014-15 FIRST-YEAR DENTAL THERAPY CLASS PROFILE

Total Number of Applicants
Class Size

42
24

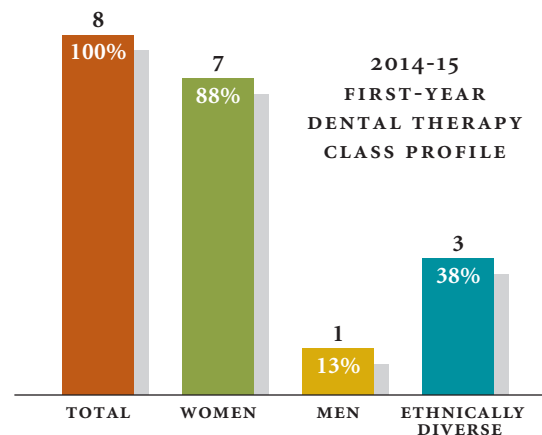


Average GPAs

Overall GPA	3.36
Science GPA	3.07
Prerequisite GPA	3.30

Total Number of Applicants
Class Size

17
8*



Average GPAs

Overall GPA	3.24
Prerequisite GPA	3.24

Reaching Out Around the World

When the Rwanda Ministry of Health approached the Clinton Health Access Initiative to help in its efforts to strengthen the specialized health workforce in Rwanda, the initiative turned to academic partners in the U.S. to lend their expertise to the challenge. The resulting consortium of schools and medical centers, including two dental schools—at Harvard and Maryland—formed a seven-year partnership with the Rwandan government. Launched in 2012, the Human Resources for Health (HRH) Program was charged with building the educational infrastructure necessary to create a sustainable quality workforce and healthcare system in Rwanda.



Karl Self (L)

At the time, Kigali Health Institute was home to the country's only oral health education program where students could earn a dental therapy degree. Students pursuing advanced degrees studied abroad.

But how do you improve oral health for a population of 11 million, when the country has no dental school, an insufficient number of faculty to educate oral health professionals, and maybe a total of 30 dentists?

The HRH set out to establish a dental school to educate dental assistants, dental therapists and dentists through one unified training program. But although dental therapists had practiced in Rwanda for several years, HRH had no experience with dental therapy.

They sought out Karl Self, DDS, MBA, director of dental therapy at the University of Minnesota School of Dentistry—

the only dental school in the United States that educates dental therapists.

"I'm taking the lessons we learned developing the dental therapy program at the University of Minnesota, and applying them here at the University of Rwanda," Self told the University's Academic Health Center over Skype while working in Kigali, Rwanda.

Self traveled to Rwanda in January 2015 to provide strategic planning for the dental therapy program.

"Rwanda is really an up-and-coming country here in Africa," Self said. "It's critical for public health to improve in order for society to progress as well, because you need healthy people to participate in the development of civil society."

Twenty years after the genocide in which many health professionals either fell victim or fled, Rwanda is still rebuilding. In the aftermath of the 1994 atrocities, life expectancy at birth was just 28 years, according to Worldbank. Today, that figure has more than doubled.

Still, surveys by the Ministry of Health revealed that oral diseases caused 15% of morbidity cases at Rwandan district hospitals in 2011, so improving oral health is a priority.

"We know that most oral diseases are easily preventable. The high number of people visiting hospitals with oral problems suggests there is an access to care issue," Self said.

There are currently about 330 dental health providers (including about 30 dentists and 300 dental therapists) in the country, Self said. For a population of 11 million, that means 33,000 patients for one dental provider. The ratio for dentists is even more alarming, with 300,000 patients for every one dentist.

By implementing change in the education system, Self and others with HRH are hopeful they can not only increase the number of dental providers in Rwanda, but improve the quality of oral health for its citizens.

"We want to educate the new dentists alongside dental therapists to create a more collaborative work setting," Self said. "It helps these future providers understand their role and how they can seek or provide support from others on the care team. And because oral health impacts the whole body, improvements will have a cascading effect on other aspects of health and well being."

"Gaining a comprehensive understanding of Rwanda's oral health care system is more complex and nuanced than the 3-4 sentences that usually are said about it," Self said. "But this project will have lasting impact on the people of Rwanda and we hope this can be a model for other countries in Africa."

Self returned to Minneapolis from his work in Rwanda at the end of March. ☉

PHOTO COURTESY OF KARL SELF

People



Karen Quick



Heather Conrad



Wook-Jin Seong



Mehrdad Hairani



Christine Lucachick

Appointed: Karin Quick, Ph.D., D.D.S. (Primary Dental Care-Dental Public Health) to the American Dental Education Association Women's Affairs Advisory Committee for a three-year term, effective March 2015.

Selected: Heather Conrad, D.M.D., M.S. and **Wook-Jin Seong,** D.D.S., M.S., Ph.D. (Restorative Sciences-Prosthodontics) to participate in the American Dental Education Association's Leadership Institute Class of 2015. The program supports the nation's most promising individuals at academic institutions in becoming leaders in dental and higher education.

Selected: Mehrdad Hairani (first-year dental student) to spend a summer conducting research at the National Institute of Dental and Craniofacial Research (NIDCR) in Bethesda, Maryland. Hairani was a 2014 Summer Research Fellow, mentored by Wook-Jin Seong. He hopes to pursue his research interests in bone mineralization or oral cancer.

Named: Christine Lucachick (D3) as ASDA Delegate of the Year representing the American Student Dental Association's District 8. Selected by the association's Board of Trustees from among all chapter leaders in the district, Lucachick was recognized for her personal dedication and outstanding achievement on behalf of ASDA and its local chapter. She received the award at the ASDA Annual Session held February 18-21 in Boston. ASDA's District 8 represents students at dental schools in Minnesota, Iowa, Nebraska and Missouri.

“People have said to me, ‘We’ve mapped the human genome, what’s left to do?’ And I think that’s ridiculous. Genetic research is like a book with no pictures, no capitalization, no punctuation—and you are expected to read this book. We haven’t even begun to identify all the genes.”

—Robert J. Gorlin, D.D.S., M.S.



More than 100 colleagues and friends turned out to dedicate a remodeled 16th floor lobby and conference room in memory of former faculty member Robert J. Gorlin, D.D.S., M.S. For half a century, he pioneered research in oral and maxillofacial pathology, genetic defects and syndromes, craniofacial disorders and hereditary hearing loss. Several of the syndromes and diseases he identified bear his name. Robert Gorlin died in 2006 at the age of 83.

2014-15 New Faculty Hires

Keith A. Mays Named Associate Dean for Academic Affairs



Keith A. Mays

"I believe that there's never been a better time to be a dentist," says **Keith A. Mays, D.D.S., M.S., Ph.D.** "I'm excited about an opportunity to embark on a new challenge that will facilitate greater involvement in helping to prepare our lifetime learners for a career in dentistry and help develop opportunities for our faculty."

The new challenge Mays so enthusiastically refers to his recent appointment as associate dean of academic affairs. In January, Mays joined the School of Dentistry faculty as academic dean and associate professor (tenure-track) in the Department of Restorative Sciences, Division of Prosthodontics. Prior to his arrival in Minnesota, Mays directed the Division of Prosthodontics at East Carolina University School of Dental Medicine.

In welcoming him to the School of Dentistry, Dean Leon Assael lauded Mays for his broad-based experience in curriculum development and didactic laboratory and clinical teaching. Said Assael, "Dr. Mays has a pragmatic approach to management, a keen sensitivity to the needs of individuals, and an appreciation for the dynamic relationship between patient care and student education. His unique insights into a teaching program that integrates all dental disciplines will help us continue to best serve our patients and provide experiences for students and residents that will last their entire professional career."

Mays's academic career also has included clinical instruction and preclinical laboratory instruction, student advising, private faculty practice, and service as the assistant director of the University of Maryland General Practice Residency Program. Additionally, he has a strong commitment to faculty development and leadership experience in a variety of dental school and dental organizations

Mays earned his doctor of dental surgery degree from the University of Michigan School of Dentistry and completed a one year General Practice Residency at the University of Michigan Hospital and Clinics. He received a certificate and a master of science in prosthodontics from the University of Iowa College of Dentistry and a Ph.D. from the University of Maryland Dental School.

His research interests include oral motor function, specifically compensatory movements of the tongue and jaw during speech, swallowing and mastication, and orofacial morphology. He also has been investigating the use of digital dentistry as an assessment tool in pre-clinical dental education. ☺



Megan Arnold, L.D.H., B.S.D.H., M.A., Division of Dental Hygiene



Vladimir Leon-Salazar, D.D.S., M.S.D., Division of Pediatric Dentistry



Grishondra Branch-Mays, D.D.S., M.S., Division of Periodontology



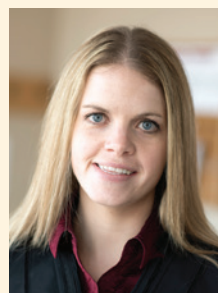
John Michael Monti, D.D.S., M.S., Division of Comprehensive Care



Tenzin Dadul, D.D.S., M.D.S., Division of Oral Medicine and Radiology



Harold Kai Tu, M.D., Division of Oral and Maxillofacial Surgery



Maren Hall, D.D.S., Division of Outreach



Stephanie Wetzel, D.D.S., Division of Oral Pathology



A Letter from the President

As president of the School of Dentistry Alumni Society, I had the honor of presenting the 2014 Distinguished Dental and Dental Hygiene Alumni awards at the Dean's Reception on April 24 to Dr. James Zenk and Ms. Debra Sidd. As I read the letters of support for their nominations and listened to their acceptance speeches, it reminded me of how important mentoring is in our profession. Both Dr. Zenk and Ms. Sidd honored their dental school mentors as well as their professional mentors. As alumni, I feel that it is our responsibility to mentor the next generation, whether that is by providing shadowing experiences to aspiring dental school students, meeting face-to-face with current students, or by networking with new dental professionals. We can offer a perspective that is unique and highly valued. I urge you to take advantage of mentoring opportunities so that we can make a difference and ensure that the next generation is ready to take our place in the community as an oral health care provider.

The Alumni Society has been making great strides this past year in focusing our efforts and energy on engaging alumni. If you're in Minnesota, you've probably heard about our networking events taking place in the Twin Cities, Duluth and Rochester. I hope you will be able to join us at a future event. We'll host our 21st Annual Golf Classic on July 27. The BIG NEWS: We're at a new location this year—Rush Creek Golf Club in Maple Grove. It is arguably the best public course in the Twin Cities. We expect to sell out, so be sure to register your foursome as soon as possible to ensure that there is a spot for you! With the growth of this event, we are looking for volunteers to help prepare for and to assist on the day of the event. Volunteering at the Golf Classic is a fun and easy way to become involved with our alumni society and to spend some time with students, friends and colleagues at the same time. More information is available online at www.dentistry.umn.edu/alumnigolf.

And speaking of fun, Homecoming is scheduled for the end of September. According to Kenny Blumenfeld, weather expert, College of Liberal Arts alumnus, and this year's speaker at the UMAA Annual Celebration, the last week of September through the first week of October is the best weather time of the year for Minnesotans. I invite you to come back to campus and join the School of Dentistry in the Homecoming parade on September 25, and Ski-U-Mania followed by Gopher Football on September 26. It's a great time to be on campus.

Finally, thank you for the pleasure of serving as president of the School of Dentistry Alumni Society this past year. I look forward to what the future holds for our school, our students and especially our alumni.

Go Gophers!

A handwritten signature in black ink, appearing to read 'T. Smyth'.

THOMAS SMYTH, D.D.S. '00
President, School of Dentistry Alumni Society
www.dentistry.umn.edu/alumni

Time for a Class Reunion?

The Alumni Office can help. Contact Emily Best (612-625-6811 or emilyj@umn.edu) to request current mailing labels for your classmates, promote your reunion via email, and receive Gopher spirit items and prizes for your event.



CONNECT WITH US
ON LINKEDIN AND FACEBOOK.

Award-Winning Alumni

Debra J. Sidd: 2014 Distinguished Dental Hygiene Alumna



Debra J. Sidd

Debra J. Sidd is a dedicated clinician, educator, lifelong learner, and champion for interprofessional collaboration and evidence-based care in clinical practice and the classroom. Over her 30-year career as a clinician and an educator at four institutions of dental hygiene education—including three years at the University of Minnesota—she has touched the lives of thousands.

Sidd earned a G.D.H., a B.S. degree in dental hygiene, and a master of education from the University of Minnesota. As faculty and chair of the Normandale Community College (NCC) Dental Hygiene Program, she's been instrumental in threading evidence-based dentistry (EBD) throughout the dental hygiene curriculum and in facilitating experiences for students and alumni. Recently, she brought together regional dental professionals around the topics of effective teaming, clinical application of pharmacology, and EBD.

She also is involved in the National Dental Practice-Based Research Network.

Sidd is an NCC Foundation board member. She actively promotes campus-wide commitment to student success, and advocates for dental hygiene scholarships, alumni communication and fundraising. She co-chaired the Financial Resources Committee and has been active in strategic goal planning, dental hygiene program admissions and faculty selection, and was a member of the Health Professional Services Program Advisory Committee. In 2011-12, she participated in the Luoma Leadership Academy, an 18-month program for developing leadership for the Minnesota State Colleges and Universities.

Sidd chaired the Minnesota Dental Hygienists Association (MDHA) Ethics and Peer Review Council for 12 years. She authored a newsletter column on the topic, was an MDHA delegate, and was involved in competence assurance system implementation, long range planning, student awards, recruitment activities, and curriculum development. She's also a past president of the MDH Educators' Association.

In addition to the U-M alumni award, she received the NCC Distinguished Faculty Member Award, the NISOD Award for Excellence in Teaching, and was named MnSCU Board of Trustees Outstanding Educator and MDHA Member of the Year.

James K. Zenk: 2014 Distinguished Dental Alumnus



James K. Zenk

James K. Zenk graduated from dental school in 1980 and embarked on 30+ year career that's positioned him at the forefront of community engagement and in leadership roles at the highest levels of the profession. He is at once accomplished and self-effacing, a friend to all who know him, a knowledgeable voice on issues of importance, and a great supporter of the University of Minnesota School of Dentistry.

Zenk began his career as a general dentist in his hometown of Montevideo in 1981. Over the years, he and his wife, Sonja, raised three children and his one-person dental office grew into a team of 24. He became involved in the community, serving as a member and president in the Kiwanis of Montevideo, Chamber of Commerce, Ducks Unlimited and Our Saviors Lutheran Church.

He's also held numerous positions in the West Central District Dental Society, including that of president (1991). He founded and chaired the Minnesota Dental Association (MDA) Rural Dental Health Committee, which focuses on concerns and challenges facing rural Minnesota dentists, and has been an MDA officer and president (2002-2006) and a delegate to the American Dental Association (ADA) House of Delegates (2001-2007). In October 2012, he was elected to a four-year term as ADA 10th District Trustee, representing association members in six states. Additionally, he is a member of the Academy of General Dentistry, the American/International College of Dentists, the University of Minnesota School of Dentistry Continuing Education Advisory Committee, and the School of Dentistry's President's Club.

Zenk also was instrumental in the launch of the Rice Regional Dental Clinic in Willmar. He was an advocate with area dentists in support of a dental school outreach initiative that partnered the University with Rice Memorial Hospital to build a new, 10-chair dental clinic where students treat patients from 17 counties. Zenk continues his commitment to the clinic as both a member of the clinic advisory board and as a volunteer adjunct faculty member of the School of Dentistry, where he's taught since December 2007.

Class Notes

Please submit brief notices about milestone events and activities to: *U of M School of Dentistry, Alumni Relations* (attn: Emily Best), 515 Delaware St. S.E., 15-136 Moos Tower, Minneapolis, MN 55455 or emilyj@umn.edu.

Dentistry is published two times a year. Deadlines for submission are: Spring issue: January 1; Fall issue: July 1. Please note: *Dentistry* cannot publish birth and marriage announcements.

1945

James Albani (D.D.S.), Glenwood, Minn., died on March 10, 2015. He practiced dentistry for 39 years in Benson, Minn., before retiring in 1981 and moving to Glenwood.

1958

Connie Leigh (D.H.), San Diego, Calif., retired from practice and is now a volunteer docent on the USS Midway.

Smart Practice, co-founded by Naomi Rhode (D.H.) of Phoenix, Ariz., was recognized as the 11th Healthiest Workplace in the Nation in 2014 and the top Healthiest Employers (mid-size) by the *Phoenix Business Journal*.

1966

Richard P. Walters (D.D.S.), Hong Kong, received the National Eagle Scout Association (NESA) *Outstanding Eagle Scout Award* in March 2013. The prestigious recognition is granted by the local council's NESA Committee to Eagle Scouts who have demonstrated outstanding achievement at the local, state, or regional level. After two years in Chad, Africa, with the Peace Corps, Walters and his wife moved to Hong Kong in 1969 where he became president of the Hong Kong Dental Association from 1985-86 and initiated contact with the Stomatological Division of the Chinese Medical Association, now the CDA. He served on the Dental Council for six years, chaired the Ethics and Legislation Committee for many years, was a member of organizing committees for two regional and two worldwide dental congresses, did voluntary dentistry for a drug addiction treatment center and for the Children's Protection Society, and taught part time at the Prince Philip Dental Hospital for twenty-two years. An Honorary Life Member of the HKDA, Walters retired nine years ago and lives in Hong Kong and Paris with his wife, Sandra. He is still active in Boy Scouts of America.

1967

Stephen F. Litton (D.D.S.), Golden Valley, was named the 2015 *Guest of Honor* at the Minnesota Dental Association's annual Star of the North Meeting in St. Paul, Minn. in recognition of his career-long commitment to advancing the profession and ensuring access to care for the underserved. At the University of Minnesota, Litton was an assistant professor in the dental school's anatomy department (1972-85), and served on the School of Dentistry



Stephen F. Litton

Alumni Society Board for 12 years and on the University of Minnesota Alumni Association National Board for six years. He's the recipient of several of the University's highest alumni honors, including the School of Dentistry Alumni Society's *Distinguished Alumnus Award* (2001), the U-M Alumni Association's *National Volunteer of the Year Award* (2006) and the *Alumni Service Award* from the University's Board of Regents in 2009.

Litton has served on numerous Minneapolis District Dental Society committees and in all officer positions, including president (1999-2000). He was also, for six years, treasurer of the Minnesota Dental Association, has been a delegate to its House of Delegates, is the current president of the Minnesota Dental Foundation, and is the fundraising lead for the Minnesota Mission of Mercy. Litton is the recipient of the *Roger J. Fredsall Distinguished Service Award* from the Minnesota Association of Orthodontists; the *Earl E. Shepard Distinguished Service Award* from the Midwestern Society of Orthodontists; the *Outstanding Service Award* and the *President's Award* from the Minnesota Dental Association; and the *Gini Award* from Smiles Change Lives. Litton received his bachelor of science degree, doctor of dental surgery degree, a certificate in orthodontics, and a Ph.D. in anatomy from the University of Minnesota. He was in private orthodontic dental practice in Golden Valley for 40+ years.



Howard Taylor

1971

Howard Taylor (D.D.S.), Minneapolis, Minn., received the Minnesota Dental Association's 2014 *President's Award* on April 24 at the association's 2015 annual Star of the North Meeting in St. Paul, Minn.

Active in both his professional and community life, Taylor was president of the St. Paul

District Dental Society and also served as chair of a number of district and study club committees. In 2011, he was elected MDA Speaker of the House. Serving in this position during a time of leadership transition at the MDA, he was instrumental in implementing change within the House of Delegates, spending endless hours in self-study and then mentoring staff and association leaders in the changes, all the while encouraging greater engagement in the governance process and leading training sessions for district and committee leaders. He has also been involved with community events, including serving as the Minnesota Mission of Mercy lead for post-operative care, and spearheading a fundraising initiative for the needy within his faith community. Taylor grew up in Northwest Minneapolis and has practiced in that area for four decades.

1972

Carney Middleton (D.D.S.) died on February 1, 2015. Carney was a retired Army colonel and native of Deerwood, Minn. While at the University of Minnesota, he became involved in ROTC and enlisted in the Army after graduation, serving as a U.S. Army Dental Corps officer on a three-year tour of duty in Heidelberg, Germany, and at Fort Devens, Massachusetts. He then practiced general dentistry in Carrington, North Dakota, until he was called to active duty during the first Gulf War (1990) at which time he sold his practice. He served as commanding officer of a U.S. Army Dental Detachment deployed to the Middle East Theater of Operations during Operation Desert Storm/Desert Shield. After his service in the Gulf, Carney worked for a time as a locum tenens in North Dakota and Minnesota. In 1999, he became a contract dentist at the U.S. Army Dental Clinic in Hanau, Germany. He served as the U.S. Army Dental Contract Project Director since 2004.

1973

Gary Johnson (D.D.S.), Phoenix, Ariz., retired from full time practice and is now an assistant professor in the Midwestern University College of Dental Medicine-Arizona in Glendale.

1975

Class Reunion: April 2015



(1975 continued from page 17)

George Brockway (D.D.S.), Fulda, Minn., sold his dental practice in 2015 after 38 years of dental practice to Gary Plotz, Jr. (2006), owner of Shetek Dental Care with offices in Slayton and now Fulda, Minn. Prior to becoming a dentist, Brockway received a degree in pharmacy, practicing for two years in Minneapolis and three years in Chicago.



Jill Stoltenberg (D.H.), Shoreview, Minn., was named the 2014 University of Minnesota School of Dentistry *Century Club Professor of the Year*. She received the award on April 25 at the annual Dean's Reception held in conjunction with the

Minnesota Dental Association's *Star of the North Meeting*. Watch for a profile article in the Fall issue of *Dentistry Magazine*.

1977

Frederick (Rick) Nolting (D.D.S.), Byron, Minn., received the Minnesota Dental Association's 2014 *Outstanding Service Award* on April 24 at the association's 2015 annual Star of the North Meeting in St. Paul, Minn.



Frederick (Rick) Nolting

Nolting began his career as a clinical radiology instructor and course director at the University of Louisville (Kentucky) School of Dentistry and then at the Rochester (Minnesota) Area Vocational Technical School. He served for several years on the MDA's Environment and Safety Committee, as well as its Disaster Preparedness Subcommittee and Radiology Safety Work Groups, authoring 11 articles in *Northwest Dentistry* to educate members on the topics. He was actively involved in the Zumbro Valley Dental Society and the Southeastern District Dental Society, serving as its president, MDA Trustee, and as delegate to the House of Delegates for several years. Additionally, he spearheaded a number of regulatory efforts, including developing a radiology safety manual for MDA members and working collaboratively with legislators and MDA representatives to pass cone beam regulation exemption for dental services. In 2010, Nolting received the MDA's *Legislative Achievement of the Year Award* for securing passage of a Good Samaritan Law to provide liability protections to dentists volunteering in declared dental emergencies.

1978

R. David Resch (D.D.S.), St. Paul, Minn., was elected second vice-president of the Minnesota Dental Association.

Daniel Rose (D.D.S.), Pillager, Minn., was elected president of the Minnesota Dental Association.

1982

Peter Cannon (D.D.S.), St. Paul, Minn., was elected president-elect of the Minnesota Dental Association.

1983

Kenneth Bagby (D.D.S.), Billings, Mont., was elected Fellow of the International College of Dentists during its 85th annual convocation in San Antonio in October 2014. This highest honor is bestowed on those who exhibit the college's ideals of integrity, leadership and service to both the profession and the public. Bagby has practiced in Billings for nearly 30 years.

Deborah Lien (D.D.S.), Rochester, Minn., received the *Roger J. Fredsall Distinguished Service Award* from the Minnesota Association of Orthodontists for her outstanding service to the organization and her dedication and commitment to orthodontics and to the community. Elected president of the Midwestern Society of Orthodontists on September 12, 2014, she practices at Lien Orthodontics in Blooming Prairie, Minn., and has served patients in SE Minnesota for 28 years.

1984

Bradley Nelson (D.D.S.), Bayport, Minn., was named co-chair of the Minnesota Academy of General Dentistry (MAGD) Continuing Education Committee. Nelson previously served as MAGD president from 2013-14. On the Continuing Education Committee, he will be in charge of arranging specialty courses for general dentists.

Karl Self (D.D.S.), Minneapolis, Minn., spent three months in Kigali, Rwanda, as part of the Clinton Health Access Initiative. See article on p. 12.

1985

Kevin Dens (D.D.S.), Baxter, Minn., was elected first vice president of the Minnesota Dental Association.

Class Reunion: April 2015



2005

Jennifer Kalpin (D.D.S.), St. Cloud, Minn., finds creative outlet playing guitar and singing in a rock band. Kalpin performed at The Pickled Loon in St. Cloud this past February as a member of the band Pussytoes. Kalpin opened her own practice in St. Cloud in January 2014.

2006

Conor Casey (D.D.S.) joined the Hawksford Larson Dental Care team in Hayward, Wisc. After graduation, Casey worked for two years as a general dentist before deciding to specialize in prosthodontics. He attended the University of Alabama at Birmingham for his graduate in prosthodontics certificate, then practiced in Colorado for three years before moving his family back to Wisconsin.

2007

Samuel LaChance (D.D.S.), St. Paul, Minn., received the Minnesota Dental Association's 2015 *New Dentist Leadership Award* on April 24 at the association's 2015 annual Star of the North Meeting in St. Paul, Minn. LaChance



Samuel LaChance

was recognized for his contributions to his patients and profession through service to the St. Paul District Dental Society as a member on the Education Committee and Executive Council, as incoming district treasurer, and as a member and chair of the district's Midwinter Meeting Committee. Currently a general dentist and partner at Associated Dentists in St. Paul, he is committed to educating patients and ensuring they are comfortable with their oral health treatment plan. He also provides shadowing experiences for pre-dental and dental assisting students, is a *Give Kids a Smile* and Minnesota Mission of Mercy participant, and also led an initiative for his group dental practice to provide geriatric dental care at a senior housing and assisted living facility in St. Paul.

2010

Zhenyu Liang (D.D.S.), Fennimore, Wisc., recently opened Fennimore Dental in Fennimore, Wisc. to serve the rural area. Liang purchased the practice from Dr. Richard Lofthouse who retired after practicing for 31 years.

2012

Rachel Brown (D.D.S.), Grand Island, Neb., is the new owner of Cottonwood Dental, formally known as Superior Dental Health. Brown is a Montana native. In 2013, she received her AEGD certification from Lutheran Medical Center in Alamosa, CO.

EventsCalendar

JULY 2015

July 27
21st Annual School of Dentistry Alumni Society Golf Classic
7:30 a.m. Shotgun Start

***New Location:**
Rush Creek Golf Club
7801 County Road 101
Maple Grove, Minn. 55311

For directions:
www.rushcreek.com
763-494-8844

For information and registration:
www.dentistry.umn.edu/alumnigolf

July 30
Senior Banquet
(For dental hygiene students by invitation only)

For information:
(612) 625-0927

AUGUST 2015

August 5-6
New Student Orientation


SEPTEMBER 2015

September 17-19
North Dakota Dental Association Annual Session
Fargo, N.D.

Alumni Breakfast:
September 18
7:00-8:00 a.m.
Ramada Plaza Suites,
Etude Room
Fargo, N.D.

September 18
White Coat Ceremony
2:00 p.m.
Northrop Auditorium
University of Minnesota
East Bank Campus
Minneapolis, Minn.

For information:
(612) 625-0927



21st Annual Golf Classic
Friday, July 27, 2015

New Location!

Please mark your calendars to join us for the School of Dentistry Alumni Society Golf Classic!

Show your maroon and gold spirit on Friday, July 27, 2015 at a truly fun event at the **Rush Creek Golf Club**. Enjoy the best of Minnesota summer with some friendly competition, prizes and a barbecue lunch. From singles to foursomes, beginner to pro, all are welcome! Visit us online at www.dentistry.umn.edu/alumnigolf, or call (612) 625-6811 for more information.

September 20-26
Homecoming Week

Alumni Awards:
September 24

Parade:
September 25

Homecoming Game:
Minnesota Gophers vs. Ohio

September 28-October 3
American Association of Oral and Maxillofacial Surgeons
Washington D.C.

Alumni Reception:
To be announced

NOVEMBER 2015

November 5-10
American Dental Association Annual Meeting
Washington, D.C.

School of Dentistry Reception:
November 6
5:30 to 7:00 p.m.
Marriott Marquis, Salon NO
Washington, D.C.

November 14-17
American Academy of Periodontology
Orlando, Fla.

Alumni Reception:
To be announced

DECEMBER 2015

Senior Banquet
(For dental therapy students, by invitation only)
Date to be announced

FEBRUARY 2016

February 6
Give Kids a Smile Day
University of Minnesota
School of Dentistry
Minneapolis, Minn.

MARCH 2016

March 3-4
Arizona Alumni Events

Arizona MinneCollege:
March 3
Noon to 5:00 p.m.
Hilton Villas and Hotel
Scottsdale, Ariz.

Alumni Brunch:
March 4
10:30 a.m.
Sun City, Ariz.
Location to be announced

For more information

Except where noted, you can obtain further information on the events listed and/or request disability accommodations by contacting:

Emily Best
Alumni Relations
(612) 625-6811
emilyj@umn.edu

To stay informed about events at the University of Minnesota, see the Twin Cities Campus Event Calendar at www.events.tc.umn.edu

CDE Courses

Discount Available

School of Dentistry Alumni Society members are eligible for discounted continuing education. Members may receive a 10 percent discount for "lecture only" courses offered through the University of Minnesota School of Dentistry. (This discount applies to School of Dentistry Alumni Society members only and not their employees.)

AUGUST 2015

50th Annual Dental Assistants' Seminar
August 14-15, 2015

15th Annual Oral and Maxillofacial Surgery Review
August 22-23, 2015

SEPTEMBER 2015

Fall Dental Hygiene Seminar
September 11, 2015

Occlusion & Function—Postgraduate Program in Contemporary & Esthetic Dentistry: Level III
September 11-13, 2015

TMD and Orofacial Pain Miniresidency
September 14-16, 2015

9th Annual Robert J. Feigal Symposium: Pediatric Dentistry & Medicine—A Dynamic Synergy
September 18, 2015

Restorative Expanded Functions: An 80-Hour Training Program
September 18-20, 2015
October 9-11, 2015
November 6-8, 2015
December 4-6, 2015

Integration of Esthetic Dentistry and Prosthodontics
September 25, 2015

Nitrous Oxide/Oxygen Inhalation Sedation: A Training Program
September 25-26, 2015

OCTOBER 2015

Clinical Grand Rounds for the Dental Team: Navigating the Esthetic Zone
October 1, 2015

21st Annual Practice Management Symposium: Love Dentistry, Wow Your Patients, and Watch Your Practice Grow
October 2, 2015

Postgraduate Program in Contemporary, Esthetic & Implant Dentistry: Level III
October 2-4, 2015
January 21-23, 2016

Postgraduate Program in Contemporary, Esthetic & Implant Dentistry: Level I
October 2-4, 2015
November 13-15, 2015
January 8-10, 2016
February 12-14, 2016
April 8-10, 2016

Health, Safety & Infection Control in Dentistry: A 2015 Update
October 3, 2015

Miniresidency in Nursing Home and Long-term Care for the Dental Team
October 14-17, 2015

Occlusion: Current Concepts & Practical Solutions
October 16, 2015

Providing Quality Affordable Dentures: A Patient Participation Program
October 17-18 & 31, 2015

Office Oral Surgery: A Guided Experience for the General Dentist
October 19-20, 2015

Fall Recordkeeping Workshop for the Dental Team
October 22, 2015

Oral Pathology: A Practical Review & Update
October 23, 2015

New Materials, Technologies & Laser Training—Postgraduate Program in Contemporary & Esthetic Dentistry: Level III
October 23-25, 2015

Extraction Site & Ridge Preservation: A Hands-on Workshop for the General Dentist
October 24, 2015

NOVEMBER 2015

Clinical Grand Rounds for the Dental Team: Gastroesophageal Reflux Disease
November 5, 2015

Postgraduate Program in Contemporary, Esthetic & Implant Dentistry: Level II—The Patient Series
November 13-15, 2015
January 8-10, 2016
January 21-23, 2016
February 12-14, 2016
April 8-10, 2016

Fall Core Competency Day for the Dental Team
November 20, 2015

Winter Dental Assistants' Seminar
November 21, 2015

DECEMBER 2015

Clinical Grand Rounds for the Dental Team: Periodontics
December 3, 2015

For more information

For more information, to register for classes and/or to request disability accommodations, contact:

Continuing Dental Education

6-406 Moos HS Tower
515 Delaware Street SE
University of Minnesota
Minneapolis, MN 55455

Phone:

(612) 625-1418
or (800) 685-1418

Fax:

(612) 624-8159

Website:

www.dentalce.umn.edu

2014 Donors

Dear Friends,

On behalf of each student, each member of our faculty and staff, and each of the thousands of patients who have benefited from your generous philanthropic support in 2014, *thank you*. Your thoughtful support for scholarships, research, new programs, equipment, new facilities and more has had a positive impact on many individuals.

In October, we hosted a grand gala to celebrate 125 years of dental education at the University of Minnesota. Volunteers organized by Emily Best in our Alumni Relations Office lent their time and talents to create an outstanding program and truly memorable experience for the attendees. Generous sponsors helped to make the event possible. Many of you from across the country made contributions to the 125th gala fund to support initiatives that are priorities in our strategic plan as we head into our next 125 years of dental education.

Last fall we dedicated the Robert J. Gorlin Memorial Conference Center. This extraordinary makeover of the Moos Tower 16th floor foyer and conference room is a splendid tribute to an internationally renowned scholar and the only Regents Professor from the dental school. The project was championed by former Dean Michael Till who, along with a small committee of dedicated volunteers, raised more than \$100,000 to renovate the area and to provide an ongoing fund for maintenance and updating for years to come.

Special thanks to those of you who renewed your memberships and those who became new members of the Dean's Circle in 2014. Total membership grew to more than one hundred supporters who contribute \$1,000 or more each year to the *Dentistry Fund for Achievement*.

Our very good friends at Delta Dental of Minnesota Foundation awarded grants for a new Telehealth initiative, led by our General Practice Residency Program, and funding to help us expand the geriatric dental clinic and program at the Walker Methodist Health Center in Minneapolis. They also renewed generous support to expand care provided to very young dental patients at the Native American Community Clinic in Minneapolis.

And again this year, I am especially grateful to those who have included the School of Dentistry in their estate plans. You are making an investment in the future of dental education that will have a positive impact on the citizens of Minnesota and beyond.

To all of you donors in 2014 and in the future, **Thank You**.

Sincerely,



LEON A. ASSAEL, D.M.D.

Dean

Professor of Oral and Maxillofacial Surgery

We strive for accuracy when preparing these lists and apologize for any errors that may appear. We invite you to notify the Development Office at (612) 301-6663 to make any corrections.

Donors to the School of Dentistry in 2014

This list is based on outright gifts, pledge payments, and deferred pledge payments.

* **Presidents Club Members**
The Presidents Club recognizes the University's most generous benefactors.

+ **Dean's Circle Members**
Membership is determined by an annual gift of \$1,000 to the Dentistry Fund for Achievement.

3M Co**
ABC Pediatric Dentistry
S. K. Adams
Ranier M. Adarve
Laura A. Aeschlimann
Affiliated Pediatric Dentists PA
Ramon Aguirre
William S. Akey
Albert Lea Dental Care
David B. Albrecht
Donna K. Almstad
Jeffrey S. Amann
Academy of Oral and
Maxillofacial Pathology
American Association of
Endodontists Fdn.

American Dental
Accessories Inc.
American Dental Partners Fdn.*
Craig W. & Kristie M.
Amundson+
Vernon L. & Joanne
Amundson*
Harry M. Andersen
Alfred W. Anderson
David C. Anderson
Dean R. Anderson
Donald H. Anderson
Edward A. & Susan D.
Anderson+
Gary C. Anderson*
Jeanne M. Anderson

Mary S. Anderson
Maynard C. Anderson+
Odell J. Anderson
Roberta J. Anderson**
Cheryl K. Anderson-Cermin
Kirsten Andrews
Donald D. & Maribelle F.
Appleby*
Scott P. Arbit
Thomas G. Arnold
Arnold Orthodontics PA
Leon A. & Linda Assael**
Sayeed Attar & Casey L. Turner
Austin Dental Center
Roberta L. Austing
Patrick A. Aydt

Wendy Z. Bach
Mark W. Bachman
Christopher J. Bacsik & Mary
Lou C. Sabino*
Barbara H. Bailey
Bashar Bakdash*
Baker Tilly Virchow
Krause LLP
A. Richard Ballin DDS
Carl L. & Mary V. Bandt*
Brian D. & Sara Barsness
James H. Barthel*
Joseph S. & Sarah M. Basile
Marie A. Baudek
Gerald F. Baumgartner
Roger D. & Ann M.
Baumgartner
Cathy S. Baus
Richard J. & Christine D.
Baylon*
Robert C. Beattie
Jennifer L. Beaudin
Robert H. Beaumont+
Janell J. Beck
William S. Becker
Anne C. Becklean
Bruce R. Beier
Soraya M. Beiraghi
Stephen A. &
Elizabeth R. Bejarano
Bejarano Family Charitable
Giving Fund+
Perry A. Belcher*
William J. & Kathleen E.
Bellamy
Michael A. Bender
Douglas T. Bengson*
Neal U. Benjamin+
Michael M. Bennett
Thomas T. & Rita L. Bennett
Duane L. Bergh
Michelle L. Bergsrud*
Jacob R. Bergstedt
Sheldon M. & Penny R. Bernick
Fred E. Bertschinger**
Jeremy & Emily Best
Merrill A. Biel
Steven E. Bilben
Steven Bilben DDS PA+
Jason M. Bjerketvedt
Nicki L. Black
Mark A. Bloomquist
Christine M. & Donald F. Blue
Allan T. Bluhm Memorial &
Award Trust
Kendra K. Boda
Leonard E. Boeder
Jennifer L. Boehm
Chad E. Boger
Sharon K. Bogetz
William S. Boggs
John Bogle
Terrence D. Bongard+
Bernard Borkon
David O. Born
Adena F. Borodkin &
James R. Miller
Wayne L. Bottomley
Bernard J. & Susan E. Bouquet
Suheil M. Boutros
Suheil M. Boutros DDS MS PC
Walter R. Bowles
James W. Braasch
James W. & Carol L. Bracke

Lois Branch
Robert M. Brandjord*
Dwain S. & Barbara Breitbach
Charles L. Bridgeford
Broadway Dental Care
Robert G. Brockway
Gerald A. Brost
Michael R. Brown
Richard B. Brown
Timothy S. Brown+
Kurt E. Bruksch
Ann L. & Paul Brunick
Thomas D. Bruss
David F. Brust
Foster O. Bucher
Grace K. & Jon H. Buck
Aaron Bumann
John R. Burke
Ted W. Burke
Carlos O. Caballero
Heidi M. & Thomas G. Cafarella
Todd G. & Mona Calder
Charles R. & Lucy J. Caldwell
Richard L. Callender
Daniel C. & Tamara H. Callstrom+
Cambridge Orthodontics Inc.
Peter A. Cameron
Camp Smile LTD
Sharon D. Caple
R. R. Capp
Susan A. Carley
Scott D. Carlson
Paul F. & Lisa Carlson
Fred W. Carpenter
Craig R. Carr+
John M. Carrels+
Chris Carroll
Rodney J. Casad
Lisa D. Cashin Jernell+
Robert A. & Mary L. Casper
Gerald D. Cavanaugh+
Craig T. Cayo
Craig T. Cayo DDS PC+
Central Lakes Oral & Facial Surgery PA
Jaroslav & Alexandra Cervenka
Robert D. Chalgren
Jeffrey L. Champion
Jeffrey L. Champion DDS LLC
Casey A. Chantelois
Dede & Kim M. Chart*+
Julie A. Chavez
Gang Chen & Laura Y. Li
Chippewa Valley Endodontics LLC
James L. Chitwood
Chitwood Nicol & Matthews LLC
Loren C. Christensen
Stephen H. Christensen
Terry D. & Barbara A. Cisler
Paul P. Cleary
Diane S. Clysdale
Charles H. Colby*
Colgate Speakers Bureau
Estate of Harvey L. Colman
Coltene-Whaledent Inc.
Thomas H. & Paulette M. Como
Robert E. Conlin
Richard W. Copeland
Corky Nord Fund-The Minneapolis Fdn.
Terry A. Cowgill
Creekside Family Dentistry
Jon E. Cruz
Robert F. Cudworth
Cumberland Family Dental SC
Donald J. & Mary P. Cuskey
Cuskey Building Partnership LLC
Czarnowski Display Service Inc.
Michael G. Cziok

Dentsply Raintree Essix
Marcio A. da Fonseca
Marcio A. da Fonseca Charitable Giving Fund
Carol J. Dahlke+
John A. Dahlquist
Mark M. Dale*
Barbara J. Daniels
Troy E. Daniels
Stephen H. Danielson
Katherine M. Darling Lund
Joshua B. Day
Day Family Dentistry LLC
Andrew De La Garza
Andrew De La Garza Jr. DDS PA
Ralph & Carole M. DeLong
DePuy Orthopaedics Inc.*
Donna S. Dehn*+
Alan B. Delaitsch
Luis F. Delima
Delta Dental Benefit Plans of Minnesota+
Delta Dental of Minnesota Fdn.
Kevin L. Denis
Dental Depot, Inc.
Dentistry for Children & Adolescents LTD
Dentsply Tulsa Dental Specialties
Anthony J. DiAngelis+
Sharon & David M. Ditch
Mary Ann Dlugosch
Joseph M. Dobie
Joan & Lee E. Doering
Laan P. H. Dommer
John Z. & Nadia Z. Doroschak
John & Nadia Doroschak Charitable Gift Acct+
Nicholas C. Dorsher
Nicholas C. Dorsher DDS LTD
Harry R. & Janet Dorvinen*
Paul D. Douglas
Mike J. Downie
Betty E. Dresser*+
Richard R. Dryer
Charles C. Duchsherer & Julie M. Kennedy Duchsherer
David K. Dungey+
John M. Dunn
Emily U. & Scott H. Durand
Robert Durand
Timothy B. & Susan Durtsche*
Dyste Williams
Eagan Valley Dental Center PA
Eastside Endodontics Inc.
Donald V. Eckels
Gary W. Eggleston
Frederick C. & Linda Eichmiller
Norma J. Eide
Edward J. Eifert*
Jennifer L. Eisenhuth
Jennifer L. Eisenhuth DDS MS PA
Marjorie G. Ellingson
Laura M. & Robert E. Eng*+
Neal H. Engel & Jean M. Krusemark+
Lowell D. & Margaret Engel*
Engel Family Fdn.-American Endowment Fdn.+
Engel Family Trust
Gayle Engel-Sparks
Janice A. English
Robert E. & Elizabeth O. Erickson
Jerome A. & Laurel L. Erickson
Steven M. Erlandson+
Leon A. Ernster
Havva Z. Ertugrul
Roger G. Ettl
Roger G. Ettl DDS & Associates PA
Susan C. & Raymond W. Evans
Robert C. Faime

Falls Orthodontics+
Family & Cosmetic Gentle Dentistry LTD
John & Lydia Fantasia
Michael J. Fasbender
Suzanne R. Fasoli
Julie A. Feit
A. Marshall Fenstad
El Ray R. Fertig
Harriet & Joseph L. Fibel
Gerald L. Fields
Winifred G. Figenshau
David J. & Shirley M. Fihn*
Anders K. Finnvoid
Reynolds J. Fischbach
Charles D. & LaVon R. Fisher
Michael J. Fleener
Florena LLC
Brent L. Florine*
Dean A. Flugstad
Priscilla N. & Michael T. Flynn
Siu-Lun Fok
Forestview Family Dentistry
Craig B. Fowler
Jeffrey J. Fox*
Patrick J. Foy
Larry V. Franz
Benjamin J. Fravel
Jean E. Freden
Michael R. Freischel+
Craig D. Frerichs
Roy W. Fried+
Thomas F. Fritz+
Michael A. & Mary E. Fuchs+
Rick W. Fuchs
Amy J. & Brian S. Fuller
Fuller Periodontics & Implant Dentistry
Gerald N. Furseth
G. C. America Inc.
Peder A. & Maren D. Gaalaas+
Claudia A. & James R. Gaasedelen*+
Kelly R. Gallagher
Helen M. Gantzer
Todd C. Garcia
Robert P. Gardetto
Judith A. Gardner
Raymond O. & Helen L. Garland*
Rita K. & Ronald J. Garni
Barbara S. Gavic
Gregory M. & Paula Gella
Gentle Dental Care LLC
GeoDigm Corp+
Todd C. Gerlach
Elizabeth B. Germaine
Leroy W. Gerry
Raymond H. & Karen J. Gerst
David S. & Leslie M. Gesko+
Joseph A. Gibilisco*
Marshall W. Gifford
Julie Giles
John D. Gillard
Cary J. Gillingham
James A. Gilman
Robert W. Glineburg
Carrie A. Gokey Stempski
Marvin E. Goldberg*
Marvin E. & Miriam R. Goldberg Fdn.*
Lawrence I. Goldblatt
Steven B. Goldstein
Oscar F. Gomez
Richard J. Goodkind
Rajaram Gopalakrishnan
Sara Gordon
Donna J. Gottwald
Donna Gottwald DDS PC
Farhad Gounili
Dean W. & La Vaughn Govig
E. E. Grams
Grand Dental Center PC
Great Lakes Endodontics PA

Kathryn A. & Peter B. Green
Green Lake Dental Clinic
Rachel K. Grieger
David J. Griffin
Susan G. Gross
Richard W. Gross
John M. Grunseth
Fenet Gudu
Kent C. Gulden
Stephen D. Gullings
Stephen Gullings DDS
Lawrence G. Gunner
John D. Gustafson
Janna & James E. Haack
Frederick J. Haas & Sarah L. Nordstrom*
Ashley T. Haase
Gary L. Hagen
Gary Hagen Family Charitable Fnd.-Fidelity Charitable Gft Fnd.
Michael W. Hallie
Patricia L. Halloran
Hani Hamdan
David D. & June M. Hamlar
Anna T. Hampel*
Dale A. Hansen
Daniel E. Hanson
Duane T. & Marion A. Hanson
Michael D. Hanson & Jodi M. Fonkert
Hanson & Fonkert Dental Clinic PA
Kenneth M. Hargreaves & Holly Dybdal-Hargreaves
Michael J. & Sandra A. Harrison*
Robert J. Hart
Thomas P. & Carla J. Hauge+
HealthPartners Inc.*+
George L. Hegge
Peter D. & Lynlee Hehli+
Gloria S. Helgren
John W. Hellstein
Cody L. Henriksen
Henry Schein Inc.
Paul W. Hensel
Steven J. & Julie J. Henseler
Joanne C. Hermann*
Sandra L. Hersperger
Gay S. & Mark C. Herzberg
Thomas M. & Jill Herzig
John L. Hicks
Philip L. & Carole A. Hildebrandt
Arnold J. & Shirley A. Hill*
Peter G. Hill
Benjamin Hoelscher
Colleen Hofer
Hoffman & McNamara Fdn.
Tim R. Holland
Tim R. Holland DDS PA
Jeffrey N. Holmberg+
Wesley M. Hommerberg*
Thomas E. Hoover
Heather M. Horton
Houston Dental Clinic PC
The Hubbard Broadcasting Fdn.*
James R. & Julane Hugg
Kurt R. Hulse
Bruce W. & Janette B. Hultgren*
Hultgren Bryant Family Fdn.-Fidelity Charitable Gift Fdn.+
Bradley W. Hunt
Heidi L. Hurley
Implant & Gumcare Center PA
James E. Indrehus
Kay H. Ingebrigtsen*
Thomas H. Inglis*
International College of Dentists-MN Section

Robert J. & Delores E. Isaacson*+
Ebun-Oluwa S. Isawumi
MaryEllen Iversen
Lu Ann R. Iverson
James P. Jacobson & Andrea J. Kaufman
Ruth Jacobson
Gail M. Jaeger-Hymel*
Joan M. Jakubas
Bradley A. Jarvey
Bruce W. Jarvis
Eugene F. Jasper+
Josi & Steve Javinsky
Cameron J. Jayson
Ann E. Jennen & A. B. Jacobs
Dean A. & Julie A. Jensen
Brian R. Jespersen
Lee D. & Mary J. Jess*
Barbara J. Johnson
Barbara L. Johnson
Brent T. Johnson
Dennis A. Johnson*
Janet C. Johnson
Joyce E. Johnson*
Karlene A. Johnson & Keith E. Abrahamson+
Kimberly S. Johnson
Lisa M. & Sheldon Johnson
Owen W. Johnson
Paul D. Johnson
Rebecca J. & Keith A. Johnson
Richard M. & Patricia L. Johnson
Sara N. Johnson
Steven D. Johnson
Thomas G. Johnson
Wayne D. Johnson
Wayne D. Johnson Family Limited Partnership
Johnson & Bruss PA
Johnson Family Dental Care
Johnson Family Dentistry
Douglas A. & Marcia L. Jolstad*+
Douglas T. Jonak*
Linda Jones
Jay M. & Elizabeth Jones
Robert W. & Sandra L. Jones
Bradley D. Jordan
L. A. Jordan
Jostens Inc.*
Franklin R. & Caroline T. Jung
Jennifer T. Kaatz
Gerald R. & Rebecca L. Kajander*
Scott W. Kajer & Marianne Wheelock+
Charles F. Kaminski
Piranit Kantaputra
Claudia L. Kanter
John S. & Carolyn L. Kanyusik*
Bradley M. Kasson
Carl L. Kaufman
Kurt E. Kavanaugh
Robert A. Kay
Kelly J. Keeffe
Eugene E. Keller
John J. Keller
Emily S. Kelly
Gene S. Kelley
Lindell C. Kemmet
David G. Keup*
David G. Keup DDS PC
Lynn M. & Stephen Kidder
Julie A. & George J. Kinney*+
Merlin N. Kleinhuizen
Jerome H. Kleven
Margaret A. Klingele
Deborah C. Knaup
Kirby A. Knutson
Arne J. Koch
James G. Koller
Kari E. Kolling
Kristin L. Kortgard

Jean A. & William J. Kottemann
Ioannis G. Koutlas*
Ann J. Kratzer
Joe E. & M. C. Krause
Allen G. Krebs
Roy Kregel
Gwenda L. Krochok
Mercedes L. Krogstad
Robert G. Kroll
Ramesh K. Kubra
Kent R. & Christine M. Kuball
Bruce A. & Stephanie K. Kudak
John R. Kurtz
Brett J. Kurtzman
Paul H. Kwon*
Glenn W. La Bine
Clark F. La Chapelle &
Yvonne LaChapelle
LaChapelle Family
Charitable Fdn.
Linda J. La Fond
Venetia Laganis*
Lake Minnetonka
Orthodontics PA
Anna Mae E. & Douglas L.
Lambert**
John P. Lande
Timothy R. Langguth
Kristy Lappinga
Brent E. & Cynthia A. Larson*
Mary L. & Ross G. Larson
Matthew E. Larson
Thomas D. Larson*
Larson Orthodontic
Specialists LLC
Randolph L. Larue
Michael E. Lawson
Lawson Family Dental PA
Carol M. & Terry W. Leach
Edgar H. Lechner**
Gregory G. & Rebecca S. Lecy*
G. & R. Lecy Fund-Fidelity
Charitable Gift Fund
Ignatius K. Lee*
Robert L. & Sharon A. Leff
Orvin J. Leis
Bradley D. & Carrie L. Lembke
Patricia A. Lenton
Vladimir Leon-Salazar
Geraldine R. Leonard
Myer S. & M. P. Leonard*
Julie M. Leshner
Samuel C. Levine*
Deborah J. Lien
Lifetime Dental LLC
William F. Liljemark*
Glenn C. Lilleskov
David A. Linde
Edward C. & Carmen J. Linden
Kimberly A. Lindquist
Scott D. Lingle*
Susan M. & Philip J. Lingle
Betty S. & David H. Lipschultz
Walter R. List
Stephen F. and
Bonnie T. Litton**
Vicki Litwer
David W. Longworth*
Thomas Loper
Gloria E. Lopez Franco
Naty Lopez
Patrick J. & Carolyn Lorge*
David R. Louis
Jeffrey D. Loveless
Gary R. Lucachick
Anthony L. & Mary M. Lund
Nathan R. Lund
Gary D. Lunstad
Jerald H. Lyng
Larry B. & Cece Lytle
Jeffrey C. Mabry
Chantel M. Magdik
Becky S. Maher
William C. Manke

Ronald W. Marcus
Wesley R. Mark
Judith L. & Todd W. Marshall*
Leslie S. Marshall
Marcia J. Marshall
Daniel T. & Jody P. Marvin
Elisabeth C. Mason*
Scott C. Mason
Amy L. Mathews
Brian C. Mathison
Christopher M. &
Elizabeth M. Mathison
Wayne A. Mattern
Jeffrey J. Mattson
Mayo Fdn. for Medical
Education & Research
Patrick J. McCarthy
Scott B. McClanahan &
Deborah K. Johnson
Herbert F. McClellan
McClellan-Swanson
Dental Office
Bonnie J. McDonald
Jean A. McDonald
Stephen R. McDonnell
Tanner J. McKenna*
Corine N. McLellan
Claudette M. & Peter M.
McLinn
Murray M. McNair
Denny M. & Lynne J.
McNamara
Kristin K. McNamara
Twylla McPherson
Brian M. Meade
Medtronic Philanthropy*
Tammy L. Meister
Tammy L. Meister DDS MS PA
V. A. Menemeyer DDS
MS LLC
Candace A. Mensing & Robyn
R. Loewen
Metropolitan Endodontics
Carol M. Meyer*
Gordon W. & Linda A. Meyer*
Richard P. Meyer
Robert J. Micheli*
Midwestern Society of
Orthodontists
Claire O. Mielke
Mielke Baylon & Beinlich LLC
Gregory A. Mihm
John L. Mike
David G. Miller
James D. Miller
James R. & Nancy G. Miller
Mark D. Millington*
Minneapolis District
Dental Society Inc.
Minnesota Association
of Endodontics
Minnesota Dental
Association**
Minnesota Orthodontics
Dentofacial
John D. Mittelsteadt
Abdolreza Moezi
Alan D. Mogck
Karlind T. & Susan M. Moller
Alan B. Montgomery
Alan B. Montgomery
Orthodontics
Michael J. Monti
Catalina S. Morarasu
Delores J. Mordorski
Frederick B. Morlock*
Randall D. & Julie A. Moseng
Frank & Margaret Motzko
Mozo-Grau*
Maxine E. Mundt
Brian F. Murn**
Thomas D. & Mary Ann Murphy
Paul Musherure
Sandra L. Myers

Jeremy P. Myrom
V. G. Nagobads
Roy Y. Nakamoto
Irene O. Navarre
Donald H. Nelson*
Douglas R. & Patricia G.
Nelson
Gary P. Nelson*
G. P. Nelson DDS PA
Gregory W. Nelson
Robert T. Nelson
Stephen R. &
Jennifer L. Nelson
Ashley Neuman &
Damien Clark
Larry D. Neumann
Patrick J. Neurology
The New Art of Dentistry
New Horizons Dental LLC
Brandon E. & Heather Newell
Craig E. Newell
Kathleen J. Newell*
James D. Nickman*
Bonnie Nicolai
Nicollet Station Dental PA
Steven J. Nielsen
DeVonne J. & Dennis E.
Nilsson
Daniel T. Nistler
Howard M. & Mary Noack

Julia A. Olson
Lynne M. Olson Rommesmo
Roland C. Olson &
Muriel J. Bebeau
Susan M. Olson
William H. Olson
David M. Oltmans
Omicron Kappa Upsilon*
Jo Ann & Mark R. Omlie**
Jane Y. Osterberg
Louise S. Ostergren*
Monica A. Osuldsen
Emma L. Otis Czechowicz
Eric R. Overby
Mary K. Owen*
John E. Pappel
Park Dental**
Parkview Dental PLLC
Walter B. Parsons
Patterson Companies Inc.*
Patterson Dental Supply Inc.*
Andrew G. Pearson
Jan S. Pederson
Joyce E. Pederson
Michael T. Pederson
Pelican Dental*
Jorge M. Perdigao-Henriques
Donald J. Peretti
James N. Peters*

Charlotte R. & Dean E.
Rasmussen
Kimberly A. Rauk
Jason K. Read
Carmen C. Real
Lawrence J. Record*
Regional Dental
Charles C. Reichert
David A. & Teresa M. Reiland
Marta E. Reyes-Costa*
James A. & Naomi R. Rhode*
Stephen Rice & Leslie A. Schiff
Shelley L. Rice
Donald B. Rindal
Arthur D. Ringen
Ringen Dental Clinic LLC
Riverbend Endodontics PC
Riverdale Pediatric Dentistry
Gail M. Roberts
Charles J. & Doris E. Robinson
Sandra & Clair J. Robinson
Steven J. Rodriguez
Rogers Dental Center
Paul A. Roggow
Jeffrey A. Rohrer
Michael D. & Cecilia A. Rohrer
Tania I. Roloff
Dennis A. Romero
John M. Romstad

DEAN'S CIRCLE PROFILE

Dr. Kim and Mrs. Dede Chart

Kim Chart (D.D.S. '74), a retired general dentist from Duluth, Minn., and Dede Chart enjoy an active lifestyle that includes pursuits such as raspberry farming, biking, enjoying the cabin, spending time with their grandchildren, and traveling abroad. They are also steadfast supporters of the School of Dentistry and proud members of the Presidents Club and Dean's Circle giving clubs. The Charts' involvement with the school has led to meaningful opportunities such as "meeting with Dean Assael and hearing of his vision for outstate Minnesota" and "sharing great stories of wonderful careers with classmates at our 40th reunion."



George M. &
Margaret L. Noesen
Frederick Nolting
James C. Nord
John O. Nord*
Hugh E. Norsted
Northeast District
Dental Society
Northstar Dental Group LLC
Barbara E. & John D. Nydahl*
Eugene T. O'Brien
Steven W. O'Brien*
Mary A. & Jeffrey E. O'Neil**
OMS National Insurance
Company RRG
John C. Ofstehage
Jeffrey S. Ogden
Paul S. Olin*
Richard C. Oliver**
Ross G. Olness
Ross G. Olness DDS PLLC
Dale V. Olson*
Gregory A. Olson
Jeffrey E. & Tamara M. Olson*

Scott B. Peters
William E. Petersen &
Mary B. Wyatt Petersen*
Peterson & Peterson DDS PA
Joseph A. Petrino
Gina L. Pfeiffer
Mary Ella M. Pierpont*
Richard D. & Judith M.
Pihlstrom*
Thomas J. Pink
Maria R. Pintado*
Randolph R. & Peggy Pitzer
Pitzer & Kline Dentistry PC
Robert D. & Joyce G. Plumb
Mariano A. Polack
Todd A. Porter
Mercedes L. Porter
James Potocnik
Prairie Ridge Orthodontics
David C. Pull
Thomas C. Quick
Warren E. & Betty A. Quist*
Raintree Dental Inc.
Range Family Dental

Mauricio Ronderos
Gerald A. & Elizabeth M.
Rosdahl
Freeman N. Rosenblum
James D. Rostvold
Matthew J. Roszkowski
Mesa J. Roth
Kathy Rae Rothenberger
Homer D. Rovelstad
Richard J. Rozehnal
Robert H. Rubey
Joel D. Rudney &
Patricia K. Kane
Cynthia J. Ruether
Dave & Beth Rupprecht
SE Minnesota Oral &
Maxillofacial Surg Assoc
Paula S. Sabbe &
Jeffrey S. Withuski
William R. Sabes
Stephen G. Sackett
Saint Paul District
Dental Society*
Augusto V. Saldarriaga

Daniel E. Sampson
Sandstone Dental Office LTD
Margaret Schally
Paul V. Schaus
Katie L. Schelling
Stephen A. Schendel
Joel N. & Pearl B. Schieck+
Jody F. Schilling & Sachin Tuli
Kyle J. Schmidt
Ronald P. Schmidt
Alan R. & Barbara Schmucker
Alan F. Schneider
Alan F. Schneider DDS LLC
Carl E. & Grace M. Schneider
Theresa A. Schnuck
Daniel S. Schoeneman
David D. Schram
Kyle P. Schroeder
Howard R. & Minnie A.
Schroeder*
Sally W. & Wally Schuette

Sibley Dental Suite PLLC
Hugh R. & Mary Silkensen+
Thomas M. Simpson
Thomas A. & Louann Siperla
Thomas L. Sitzer
Daniel D. Skaar
Heather L. Skari
Harley B. Slaikou
Wayne O. Sletten
Smile Solutions PC
Dorothy Smith
Marjorie J. Smith
Tami J. Smith
Patrick M. Snyder
Ronald J. Snyder
Dennis Solt
Lowell F. & Judy C. Sorenson
Southdale Periodontics PLLC
Robert U. Spear
Drew F. Spencer
James E. Spitzmueller

James Q. & Lori Swift*
Aaron B. Swingdorf
Teresa A. & Bradley D.
Swingdorf
Abbas Tabibi
Marcus B. Tanabe
Patricia C. Tarren &
Terrance J. Kaase
Linda L. Tessar
Paul H. Thai
Todd E. Thierer+
Janet A. Thiets
Merry J. & Bruce E. Thoele
Anita M. Thomas
Christine C. Thompson
David C. Thompson+
Jerold E. Thoreson
Denise Thorson
Kyle D. Tidstrom*
Michael J. & Christine C. Till*
Krestine W. Tiziani

Barbara K. Veath**
Lori S. & Brett L. Veerman
Velva Dental Center
Bradley L. Videen*
Robert M. Voglewede
Kathryn M. Vorwald
Scott A. Wagnild
Daniel E. & Alice D. Waite*
D. & A. Waite Fam Fdn.-
Truman Heartlnd
Comm Fdn.
Kathryn L. Wallberg
Kami K. Wallner
Jeffrey W. & DeAnn Walters
Angela Wandera
Charles O. Watkin
Dwight R. Weathers
Carolyn M. & Donald C. Weber
Lloyd J. Weber
Shirley L. Weber
Jeremy P. Wehrman
Michael J. Weisbrod
Linda L. Weissner
Andrea C. Welch
David L. Wells
Bradley S. Wenande
Wenande Orthodontics PC
Joseph H. & Mary L. Wenner
West Central District
Dental Society
West Range Dental Care+
Westview Dentistry PA+
Meredith L. Whiting
Leslie L. Wilcox
Sandra J. Cole Wilkinson &
Charles R. Wilkinson
Gary L. Williams
Lori-Anne Williams
Mark K. Williamson
Mark M. Wilson
Gerald A. Wimmer
George H. Winn*
Winner Family Dentistry+
Andrew T. Wiswall
Wiswall Endodontics PC
Jeffrey H. Wiswall
Jeffrey Wiswall DDS MS PC
John C. Withrow
David D. Witschen
Dave Witschen DDS PA
Charles A. Wohlwend
Larry F. & Elizabeth T. Wolff*
Steven J. Wolff+
David Wong
Victoria Woo
Woodlane Family &
Cosmetic Dentistry
Kimberly A. & Donald C.
Worley
Karen J. & Robert V. Wottreng+
Virginia N. & Daniel F. Wright
Catherine E. Wurm
Stephen B. Yaholnitsky
S. Bruce Yaholnitsky
Professional Corp
Yasemin Yesil
Doris W. Yock
Jennifer & Jerald A. Yoneji
Everett L. & Joyce A. Young
Kim E. Young
Lisa A. Young
Darrell M. Yunk
Barbara L. Zajicek
Michael & Lisa V. Zakula
Mary K. Zaloker
James K. & Sonja K. Zenk**
George C. Ziegler
Cynthia J. Ziemann-Murphy
Monica R. & Paul M. Zobitz

1919 Society
*Recognizing gifts that support
the Division of Dental Hygiene.*

S. K. Adams
Donna K. Almstad
Mary S. Anderson
Roberta J. Anderson**
Roberta L. Austing
Barbara H. Bailey
Roger D. & Ann M.
Baumgartner
Cathy S. Baus
Anne C. Becklean
Ann L. & Paul Brunick
Sharon D. Caple
Susan A. Carley
Barbara J. Daniels
Donna S. Dehn**
Mary Ann Dlugosch
Joan & Lee E. Doering
Norma J. Eide
Marjorie G. Ellingson
Gayle Engel-Sparks
Janice A. English
Suzanne R. Fasoli
Winifred G. Figenshau
Helen M. Gantzer
Judith A. Gardner
Barbara S. Gavic
Raymond H. & Karen J. Gerst
Julie Giles
Fenet Gudu
HealthPartners Inc.**
Sandra L. Hersperger
Carole A. Hildebrandt
Lu Ann R. Iverson
Gail M. Jaeger-Hymel*
Dean A. & Julie A. Jensen
Barbara L. Johnson
Janet C. Johnson
L. A. Jordan
Kelly J. Keeffe
Lynn M. & Stephen Kidder
Kari E. Kolling
Kristin L. Kortgard
Joe E. & M. C. Krause
Mercedes L. Krogstad
Bruce A. & Stephanie K. Kudak
Linda J. La Fond
Patricia A. Lenton
Vicki Litwer
Amy L. Mathews
Bonnie J. McDonald
Jean A. McDonald
Medtronic Philanthropy*
Gordon W. & Linda A. Meyer*
Irene O. Navarre
Bonnie Nicolai
Julia A. Olson
Jane Y. Osterberg
Monica A. Osuldsen
Jan S. Pederson
Joyce E. Pederson
Carmen C. Real
Shelley L. Rice
Gail M. Roberts
Charles J. & Doris E. Robinson
Sandra & Clair J. Robinson
Kathy Rae Rothenberger
Cynthia J. Ruether
William R. Sabes
Theresa A. Schnuck
William J. Scholdt
Ruth A. Schumeister
Tami J. Smith
Lowell F. & Judy C. Sorenson
State Farm Company Fdn.*
Janet M. Stejskal
Linda L. Tassar
Janet A. Thiets
Genevieve M. Trumm
Barbara K. Veath**
Kathryn L. Wallberg

DEAN'S CIRCLE PROFILE



Dr. Claire Mielke

Claire Mielke (D.D.S. '08), a pediatric dentist in the Twin Cities, is grateful for her dental education and gives back to acknowledge those "who encouraged and shaped me to be the best dentist I can be." She maintains a full life balancing a dental practice, family, running, and volunteer pursuits, and is also dedicated to supporting the school. She affirms that gifts "will help dental students continue to achieve their goals by helping find the best professors and keep the technology up to date."

Michael J. Schuh
William J. Schuldt
William J. Schuldt DDS PA
David E. & Kathryn C. Schulte
Juliana & Herbert W. Schulte+
John K. Schulte
Paul D. & Julie P. Schulz
Ruth A. Schumeister
Schwab Charitable Fund
Stephen N. Schwartz
Robert C. & Inez L.
Schwegler*
SciCan Inc.
Lee C. Scotland+
Norman W. & Debra R. Scott
Kathryn A. Sealey
Thomas R. & Julie D.
Seidelmann*
Eugene F. Seleen
Wook-Jin Seong
Paul & Marilyn Serber
Paul V. & Kathryn Serenius
Sandra L. & James H.
Shambarger
Joe D. Sharkus
Joan A. Sheppard+
Judith A. & Charles E. Sherman
Myron T. Shervheim
Kenneth M. & Jeanette A.
Shipstead
E. K. Shirley
Stephen K. Shuman**
Brian & Rebekah Shumway

James Spitzmueller DDS
MSD LTD
Dita & Jeremy T. Squires
Tracy M. St. Dennis
St. Paul Dental Center LLC
Paul D. Stadem
John C. Stangl
State Farm Company Fdn.*
Dawn M. Stavish
Edward J. Stec
Vernon R. Steffens
William E. & Terese K. Stein
Mark J. Steinmetz+
Janet M. Stejskal
Donna J. Stenberg
Gregory W. Stende
Rodney A. Stensrud
Michael G. Stevens
Alan O. Stewart
Marlyn P. Storm
Cale A. Strait
James D. & Kathy S. Strampe
Richard L. Streeter
Warren W. Sturm
Christine K. Sullivan
Hsiao W. Sun
Hsiao Wen Sun DDS MS Inc.
Scott A. & Cindy T. Sundet*
Sundet Fdn.**
Bradley M. Sundick
Lance W. Svoboda
Justin S. & Thekla K. Swanson
James A. Swenson

Jack E. Tomhave
Tomhave-Olson Dental
Associates
Michael J. Toninato
Eileen Tooman
Mary M. & Richard W. Topel
Rochelle M. Topel
Kevin R. Torske
David K. Tranby
Mark B. Trehella
Tronsgard & Sullivan DDS PC
Joseph P. Trowbridge
Bruce D. Trulson
Genevieve M. Trumm
Todd T. Tsuchiya
Harold Kai Tu
William W. Turner
Thomas S. Turry
Jeffrey J. Twohig
Jeffrey J. Twohig DDS SC
David W. Twomey
Jonathan O. Twomey
George W. Tysowsky
U of M School of Dentistry
Council of Students
Kumar T. Vadivel
Richard W. Valachovic
Georgette W. Valle
Odd Valle Marital Trust+
Valley Dental Associates PA
Christina L. Van Guilder
Roderick D. VanSursum
Scott K. & Dana Varland+

Carolyn M. & Donald C. Weber
Shirley L. Weber
Linda L. Weissner
Andrea C. Welch
Meredith L. Whiting
Kim E. Young
Mary K. Zaloker

Tribute Gifts

Bold name is the person honored or memorialized.

In Honor:

Priscilla Anderson
Donald H. Anderson

Leon A. Assael**
Fred E. Bertschinger**
Jo Ann & Mark R. Omlie**

Carl L. Bandt*
Bashar Bakdash*

Doulass Blisi
Frederick Nolting

Rafael Claudio
Larry B. & Cece Lytle

David J. Clay
Paul & Marilyn Serber

Donald Davis
Thomas D. & Mary Ann
Murphy

Frederick J. Haas*
Susan G. Gross

James E. Hinrichs*
Jody F. Schilling & Sachin Tuli

Iris M. Larson
Edward J. Stec

Mark R. Omlie**
Susan G. Gross

Jerome W. Pedersen
Kimberly A. Rauk

William C. Randall*
Jo Ann & Mark Omlie**

Daniel E. Rose
Kimberly A. Rauk

Michael S. Sudit
Jeremy & Emily Best

Kyle D. Tidstrom*
Susan G. Gross

George H. Winn*
Scott W. Kajer & Marianne
Wheelock*

Edgar F. Ziegler
Grand Dental Center PC

Class of 1951
Warren E. & Betty A. Quist*

**Honoring patients who
are still alive & live far
away in Columbia**
Gloria E. Lopez Franco

**The wonderful dental
education at the U of M**
Sheldon M. & Penny R. Bernick

In Memory:

Steven C. Ager
Mark B. Trewhella

Leroy E. Albjerg
Odell J. Anderson

Earl H. Anderson
Robert J. Anderson**

James A. Benson
Thomas D. Larson

Robert B. Brannon
Craig B. Fowler

Carl C. Casperson
Richard D. & Judith M.
Pihlstrom*

Delfin M. Cruz
Jon E. Cruz

William J. Dresser*
Betty E. Dresser**

Martin Dworkin
Bruce W. Jarvis

Donald O. Erickson*
Jerome A. & Laurel L. Erickson

Gregory R. Germaine
Bashar Bakdash*
Carl L. Bandt*
Lois Branch
Heidi M. & Thomas G.
Cafarella
Julie A. Chavez
Paul P. Cleary
Richard P. Elzay*
Charles D. & LaVon R. Fisher
Gerald N. Furseth
Elizabeth B. Germaine
Ashley T. Haase
Kenneth M. Hargreaves &
Holly Dybdal-Hargreaves
Gay S. & Mark C. Herzberg
James E. Hinrichs*
Bruce W. Jarvis III
Nancy J. Laible
Ignatius K. Lee*
Myer S. & M. P. Leonard*
Stephen F. and
Bonnie T. Litton**

James R. & Nancy G. Miller
John C. Ofstehage
Richard D. & Judith M.
Pihlstrom*
Stephen Rice & Leslie A. Schiff
Michael D. & Cecilia A. Rohrer
Joel D. Rudney &
Patricia K. Kane
David E. & Kathryn C. Schulte
Heddie O. Sedano
Dorothy Smith
Dita & Jeremy T. Squires
Jill L. Stoltenberg
Michael J. & Christine C. Till*
Larry F. & Elizabeth T. Wolff*

Robert J. Gorlin*
Vernon L. & Joanne
Amundson*
Gary C. Anderson*
Carl L. Bandt*
James H. Barthel*
Soraya M. Beiraghi
Fred E. Bertschinger**
Joann C. Boraas
David O. Born
Robert M. Brandjord*

Gerald D. Cavanaugh*
Central Lakes Oral &
Facial Surgery PA
Stephen H. Christensen
Troy E. Daniels
Dentistry for Children &
Adolescents LTD
Mike J. Downie
Edward J. Eifert*
Ellen Eisenberg DMD
John & Lydia Fantasia
Florena LLC
Siu-Lun Fok
Craig B. Fowler
Todd C. Gerlach
Robert W. Glineburg
Lawrence I. Goldblatt
Rajaram Gopalakrishnan
Sara Gordon
Kent C. Gulden
David D. & June M. Hamlar
Robert J. Hart
HealthPartners Inc.**
John W. Hellstein
Gay S. & Mark C. Herzberg
John L. Hicks
Sue E. Jacobs
Bradley A. Jarvey
Steven D. Johnson
Linda Jones
Piranit Kantaputra
Eugene Keller DDS MSD
Zoya Kurago
Brent E. & Cynthia A. Larson*
Thomas D. Larson*
Patricia A. Lenton
Myer S. & M. P. Leonard*
Betty S. & David H. Lipschultz
Stephen F. and
Bonnie T. Litton**
Anthony L. & Mary M. Lund
Kristin K. McNamara
Metropolitan Endodontics LTD
James R. & Nancy G. Miller
Susan Muller, DMD, MS
Sandra L. Myers
Ashley Neuman & Damien Clark
Brad W. Neville
James D. Nickman*
John C. Ofstehage
Roland C. Olson &
Muriel J. Bebeau
Jo Ann & Mark R. Omlie**
Mary K. Owen*
Pediatric & Adolescent
Dentistry LTD
Pediatric Dental Care
Mary Ella Pierpont*
Yeshwant B. Rawal
Riverdale Pediatric Dentistry
Michael D. & Cecilia A. Rohrer
Freeman N. Rosenblum
Matthew J. Roszkowski
Nathaniel H. Rowe
Dave Rupprecht
SE Minnesota Oral &
Maxillofacial Surg Assoc
Stephen G. Sackett
Daniel E. Sampson
Stephen A. Schendel
Alan R. & Barbara Schmucker
Carl E. Schneider
David E. & Kathryn C. Schulte
Schwab Charitable Fund
Robert C. & Inez L. Schwegler*
Heddie O. Sedano
Brian Shumway
Thomas A. Siper
Thomas L. Sitzer
Marshall Solomon
Dennis Solt
Lan Su DMD PhD
Bradley M. Sundick

Lance Svoboda
Patricia C. Tarren
Michael J. & Christine C. Till*
Kevin R. Torske
Dwight R. Weathers
Jim C. Weir
David L. Wells
Joseph H. & Mary L. Wenner
David Wong
Victoria Woo
John Wright
Yasemin Yesil
David J. Zegarelli DDS PLLC

Thomas L. Grams
Todd G. & Mona Calder
Bradley W. Hunt

Frederick C. Groth
Gerald D. Cavanaugh*
Stephen H. Christensen
Edward J. Eifert*
A. Marshall Fenstad
Kent C. Gulden
Robert J. Hart
Stephen G. Sackett
David E. & Kathryn C. Schulte
Thomas L. Sitzer
Lloyd J. Weber

William L. Hartwick
Frederick B. Morlock*

Lee C. Hermann*
Joanne C. Hermann*
Barbara J. Johnson

Roger A. Hesby
Thomas F. Fritz*

Norman O. Holte*
William E. & Terese K. Stein

Robert R. Hoover
Hugh E. Norsted

Rolf E. Iversen
MaryEllen Iversen

Oliver W. Johnson
Dennis A. Johnson*

Marissa Joyce
Gentle Dental Care LLC

Marvin Krochock
Gwenda L. Krochock

Lloyd F. Leonard
Geraldine R. Leonard

Bonnie T. Litton**
Fred E. Bertschinger**
Michael A. & Mary E. Fuchs*
James R. & Julane Hugg
Robert J. & Delores E.
Isaacson**
Brian R. Jespersion
John S. & Carolyn L. Kanyusik*
Jean A. & William J. Kottemann
V. A. Menemeyer DDS MS LLC
Midwestern Society of
Orthodontists
James K. & Sonja K. Zenk**

Patrick J. Morgan
Tim R. Holland DDS PA

Robert W. Mundt
Maxine E. Mundt

Kenneth M. Nelson
G. P. Nelson DDS PA*

Allan D. Petersen
Denny M. & Lynne J.
McNamara
William E. Petersen &
Mary B. Wyatt Petersen*

Raymond G. Petersen*
William E. Petersen &
Mary B. Wyatt Petersen*

Duane E. Reiter
Jerold E. Thoreson

Charles O. Rohrer*
Alan R. & Barbara Schmucker

Charles Schachtele*
James W. Bracke
Gay S. & Mark C. Herzberg

Paul Schroeder
Kyle J. Schmidt
Howard R. Schroeder*
Burton L. Shapiro
Gary C. Anderson*
Harriet & Joseph L. Fibel
James P. Jacobson &
Andrea J. Kaufman
Josi & Steve Javinsky
Stephen F. and
Bonnie T. Litton**
Karlind T. & Susan M. Moller
Margaret Schally
Hugh R. & Mary Silkensten*
Lori-Anne Williams

Myron J. Smith
Marjorie J. Smith

Janet H. Spoodis
Donna S. Dehn**

Larry J. Squillace
Neal U. Benjamin**

Eric E. Stafne*
Bashar Bakdash*

Gregory W. Stende
David J. & Shirley M. Fihn*

Sieu M. Tu
Harold Kai Tu

Charles L. Wilkinson*
Sandra J. Cole Wilkinson &
Charles R. Wilkinson

Andrew Wischmeier
Grace K. & Jon H. Buck

Douglas H. Yock
Doris W. Yock

SCHOOL OF DENTISTRY
University of Minnesota
15-136 Moos Tower
515 Delaware Street S.E.
Minneapolis, Minnesota 55455

NONPROFIT ORG.
U.S. POSTAGE
PAID
TWIN CITIES, MN
PERMIT NO. 90155

Electronic Service Requested

Thank YOU

I am very grateful to the School of Dentistry's donors for their generosity in providing me with invaluable financial assistance through the scholarship programs. This gift has helped substantially in reducing my student loans as I finance my way through dental school. Thank you for your support and for investing in the education of future generations!

Miranda Mulligan
D.D.S. CLASS OF 2016